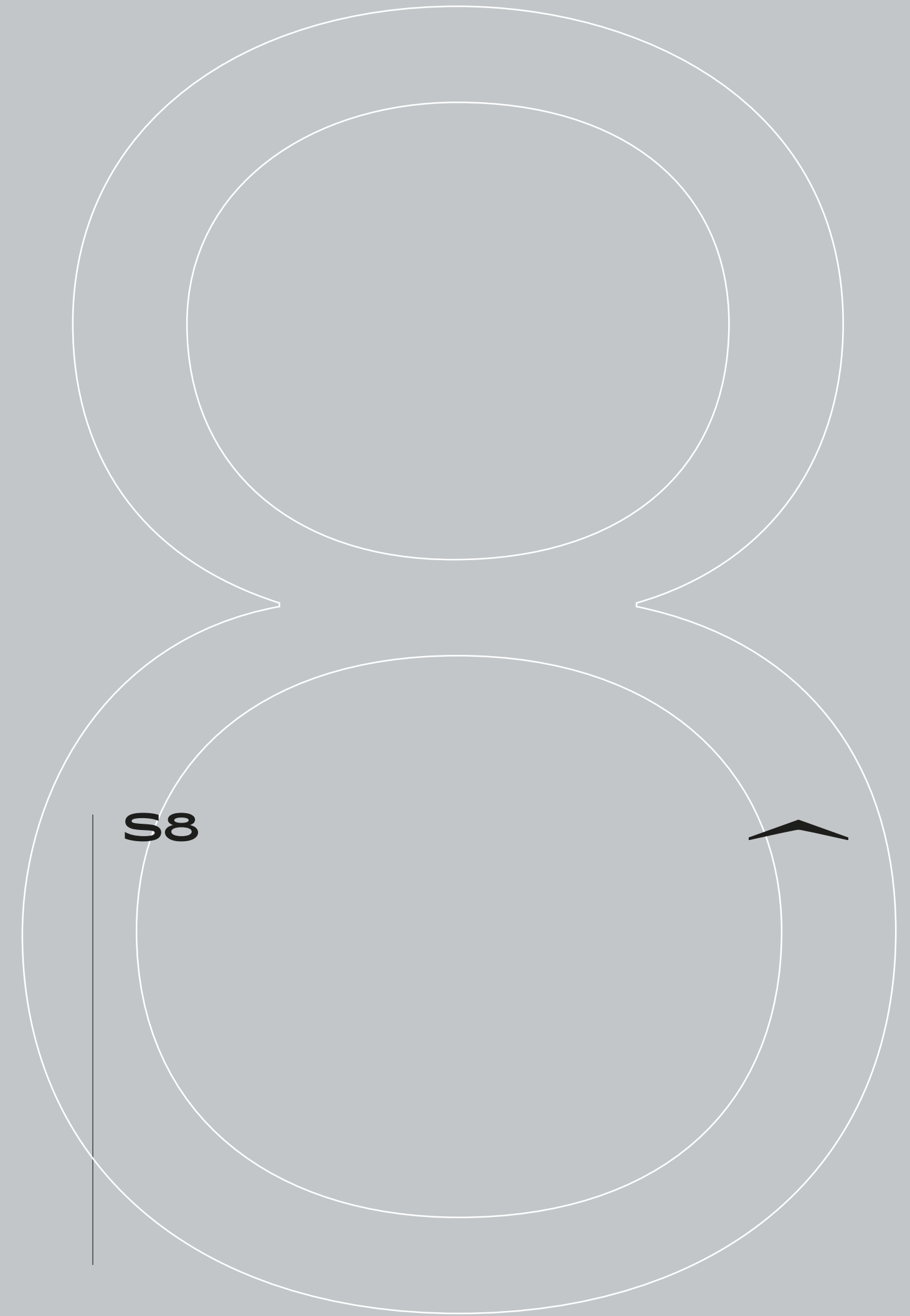


^ZIMUT



INDEX

01	WELCOME TO AZIMUT	P03
02	THE DESIGN & LIFESTYLE ON BOARD	P04
03	HER MAIN TECHNICAL FEATURES	P32
04	S8 SPEC SHEET	P41
05	THE S SERIES	P46
06	ABOUT AZIMUT	P48



A one-of-a-kind beauty, enrapturing, that steals your breath away, leaving you speechless. An extraordinary idea as the only possible pathway, to get to where you want, to explore, to go beyond.

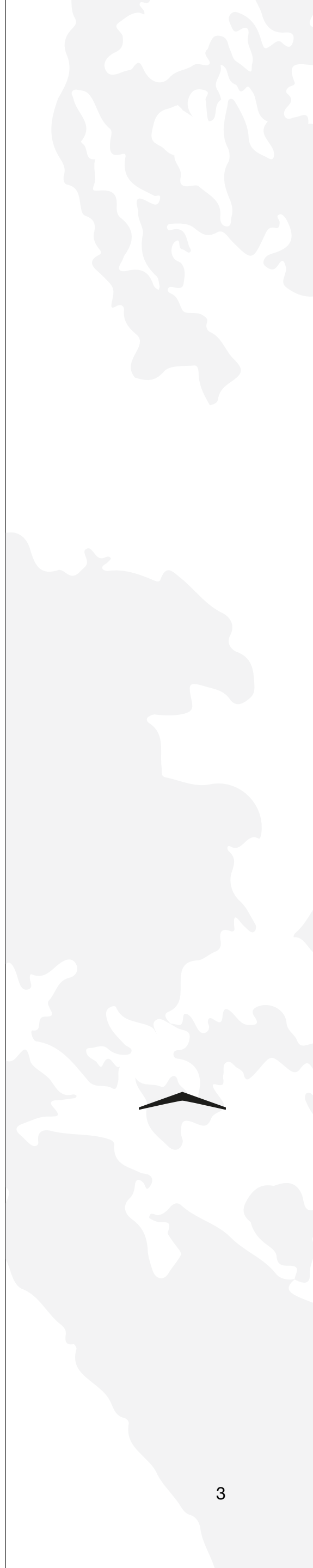
The freedom of embracing the unknown, that you know you'll love as a part of your very own story. A thought that provokes your mind and then inspires you to aim for the impossible, making mistakes, yet being brave.


A magic je ne sais quoi that enchants and intrigues you, moving you to feel more and to sense uniqueness.

The choice to risk it all, the one that makes you go for it, to impress yourself and all those who are worth it.

Welcome to Azimut.

AZIMUT.
DARE TO AMAZE.





02

THE DESIGN & LIFESTYLE ON BOARD

S8, ULTRAMODERN SOUL AND SAVOIR-FAIRE

The 24-meter beauty of the S Series, S8 is a tech-savvy sport yacht elevated by environmentally-sensitive etiquette. Her wind-drawn design and avant-garde attitude come to life through a carbon fibre soul, epitomizing absolute performance and silence while minimizing fuel consumption beyond the expectations of the category. An attractive and generous ambience permeates the lifestyle onboard, inviting guests to enjoy a liberating relationship with the sea, marked by relaxation, recreation and responsibility.

Enjoy the progressive, conscious mindset of the S8.



[Scan the QR Code to see the model brochure]



Welcome aboard, ladies and gentlemen.

Let us begin the tour.







PURE AVANT- GARDE



The exterior lines appear to be drawn onto the S8 by the wind. Sporty and fluid, they reach from bow to stern, elongating the clean hull volumes together with long windows and the sculptural use of cappings above the bulwarks. Her curvaceous upper body is wrapped in carbon fiber sinews, lightening the profile and emphasizing the wide glazed surfaces along her profile.



A SURPRISING BREAK AT THE BOW

[The gracefully aerodynamic design is strongest toward the bow, where all the lines come together to form an arrowhead. The handrail capping is gently curved, perfectly epitomizing the marriage between organic and sleek shapes.]



A FRONT-ROW SEAT TO THE SEA



[The variety of shelter and shade available for sunbathers ensures even large gatherings are able to spread out comfortably in a spot just right for each individual.]

The bow lounge is an invitation to experience the sea in its purest form. Here, generous sunpads and deeply comfortable seating create a private haven for open-air relaxation, perfect for soaking up the sun or enjoying an unforgettable point of view surrounded by horizon.





[The outdoor spaces are oases of relaxation, with sunbathing and lounging arrangements designed to enhance the all-encompassing experience of the sea.]



The exterior helm takes the driving experience to the next level, with a truly panoramic view and a complete living area.





[A retractable sunshade provides shelter without interrupting the flow of fresh sea air.]

A LIBERATED WAY OF LIFE

Designed for convivial moments, the cockpit offers plush seating and a versatile lounging space that adapts effortlessly to every occasion, from casual gatherings to quiet breaks between activities. With direct access to the water, it naturally connects guests on board, fostering a fluid, sociable atmosphere.





[A careful attention to the use of space on board led the designers to separate the galley on an intermediate deck, freeing up the bright main deck to expand the guest living and dining arrangements.]



A SPACE WITH SOUL

At the centre of life on board, the main salon is conceived as a refined gathering space where design and comfort come together. Opposing sofas define a balanced, conversational layout, inviting guests to linger in a setting that feels both intimate and open. A centrally mounted hi-lo TV, discreetly concealed when not in use, ensures perfect visibility from every angle.



[The interior palette combines neutral tones with subtle cognac and beige accents, creating a warm, contemporary atmosphere. Every surface, finish and detail speaks to the yacht's unmistakable sense of understated luxury.]



[Seamlessly connected to the lounge, the dining area offers a refined setting for formal dinners to relaxed gatherings with friends. The spacious table is framed by sophisticated décor and surrounded by large windows that bathe the space in natural light, enhancing the sense of openness and ease.]



The main salon stands out for its refined design choices. The low-profile backrests of the sofas allow natural light to flood the space and offer an unobstructed view toward the outside, enhancing the seamless connection with the sea.



The galley is a seamless blend of practicality and contemporary style. Outfitted with modern appliances, generous storage solutions, and sleek finishes, it's designed to accommodate every culinary moment. Its efficient layout ensures smooth operation at all times, supporting both relaxed onboard living and more formal entertaining with equal ease.

The helm station is a showcase of advanced technology and smart design, placing state-of-the-art navigation systems and responsive controls directly at the captain's fingertips. Every element is arranged for optimal ergonomics, ensuring effortless handling and a smooth, confident ride.

Generous seating allows both the captain and guests to share in the experience, making it not only a place of command, but also a privileged spot from which to enjoy the journey and the view ahead.



Let us discover the guest accommodations.

Shall we?





PRIVATE COMFORT

Located on the lower deck, the full-beam owner's cabin is conceived as a sanctuary of space and sophistication. At its centre, the bed is elegantly positioned to create a natural flow between the walk-in wardrobe and the private en suite, enhancing both functionality and privacy.

Refined ribbed detailing on the headboard and ceiling adds textural depth, while anthracite-toned profiles with integrated lighting sculpt the space with a dynamic interplay of light and shadow. Generous proportions invite relaxation, while premium materials elevate every surface—transforming the cabin into a personal haven designed for pure unwinding.







TEXTURED ELEGANCE

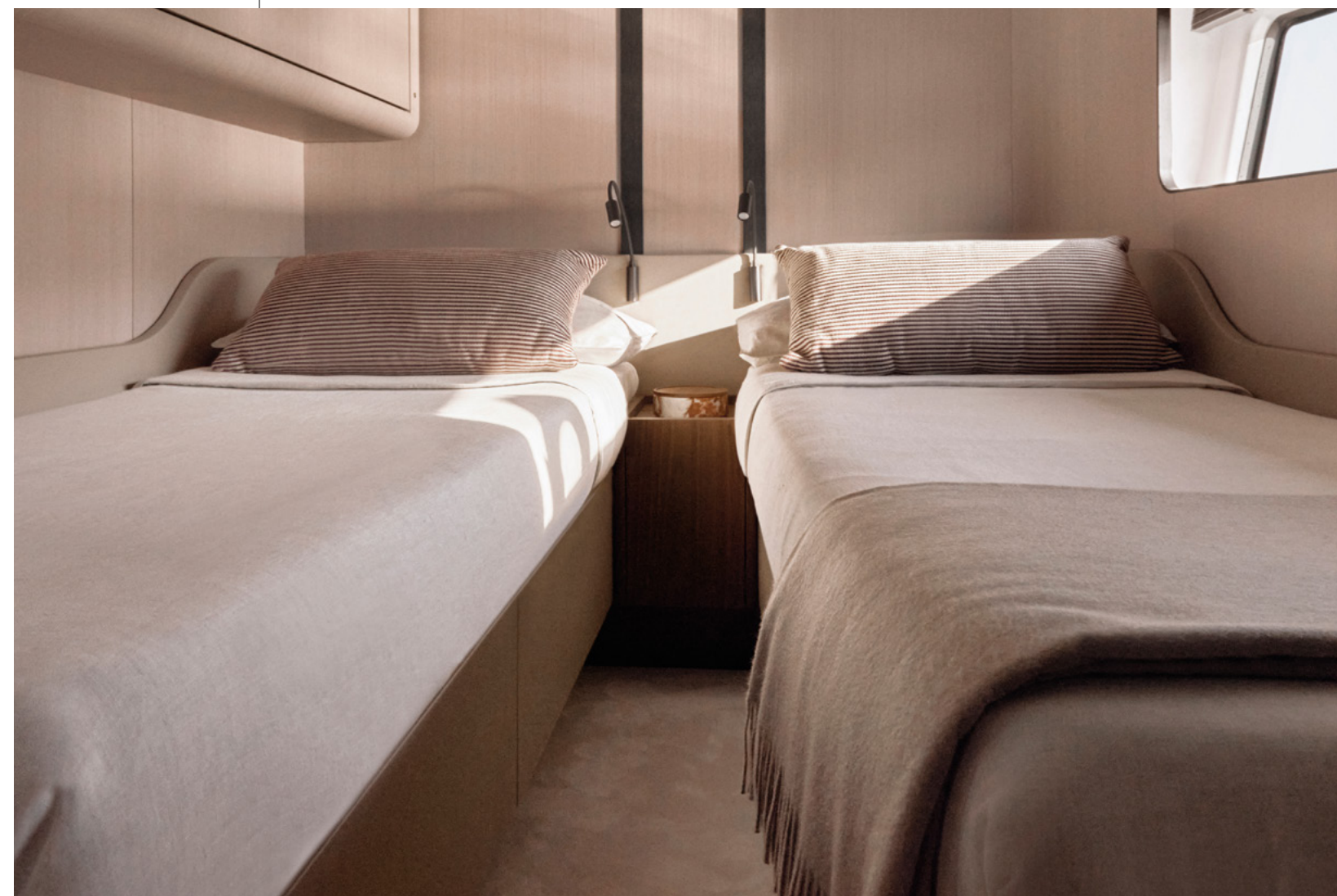
Positioned at the bow, the VIP cabin offers guests an experience that echoes the elegance and comfort of the owner's suite. The bed is gracefully framed by Canaletto walnut and soft leather accents, blending rich materials with understated sophistication. Every detail, both seen and felt, has been thoughtfully curated to create a warm, elevated atmosphere where guests feel truly valued.





[Two additional double cabins offer generous storage and smart layout solutions, ensuring comfort and functionality.]

THE ART OF HOSPITALITY



03

HER MAIN TECHNICAL FEATURES

The beauty of the S7 is not solely a matter of exterior and interior design elements that combine to perfectly play out Azimut's essence. Her beauty is also about discovering the technological advancements and special components that contribute to making her truly unique and highly innovative.



LOW EMISSION YACHT

TRIPLE POD PROPULSION COMBINED WITH CARBON FIBER

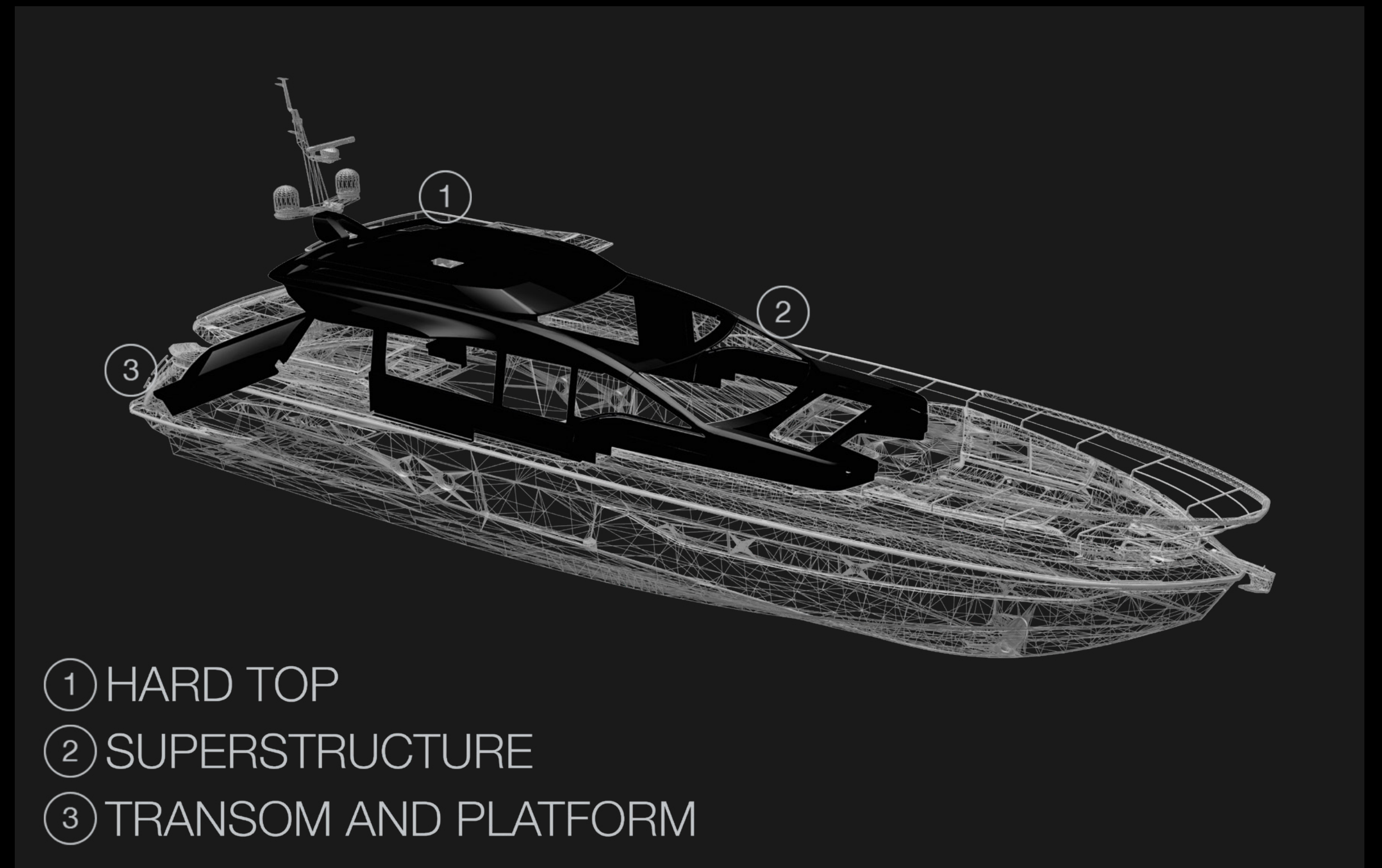
The adoption of triple Pod propulsion, combined with the optimization of the water lines and the extensive use of carbon fiber, reduces fuel consumption and CO₂ emissions by 20 to 30%* in the main speed range.

*compared to vessels of the same weight and size with a traditional hard-chine hull and shaft line propulsion



CARBON-TECH GENERATION

Azimut's pioneering use of carbon fiber lamination goes beyond pure performance. The Carbon Tech Generation offers expanded volumes on board, while maintaining excellent dynamic stability and perfect handling. Preserving the yacht's low center of gravity, the carbon fiber was focused on the upper parts of the yacht, lightening the laminated components by up to 30% and reducing the natural roll momentum up to 15%.



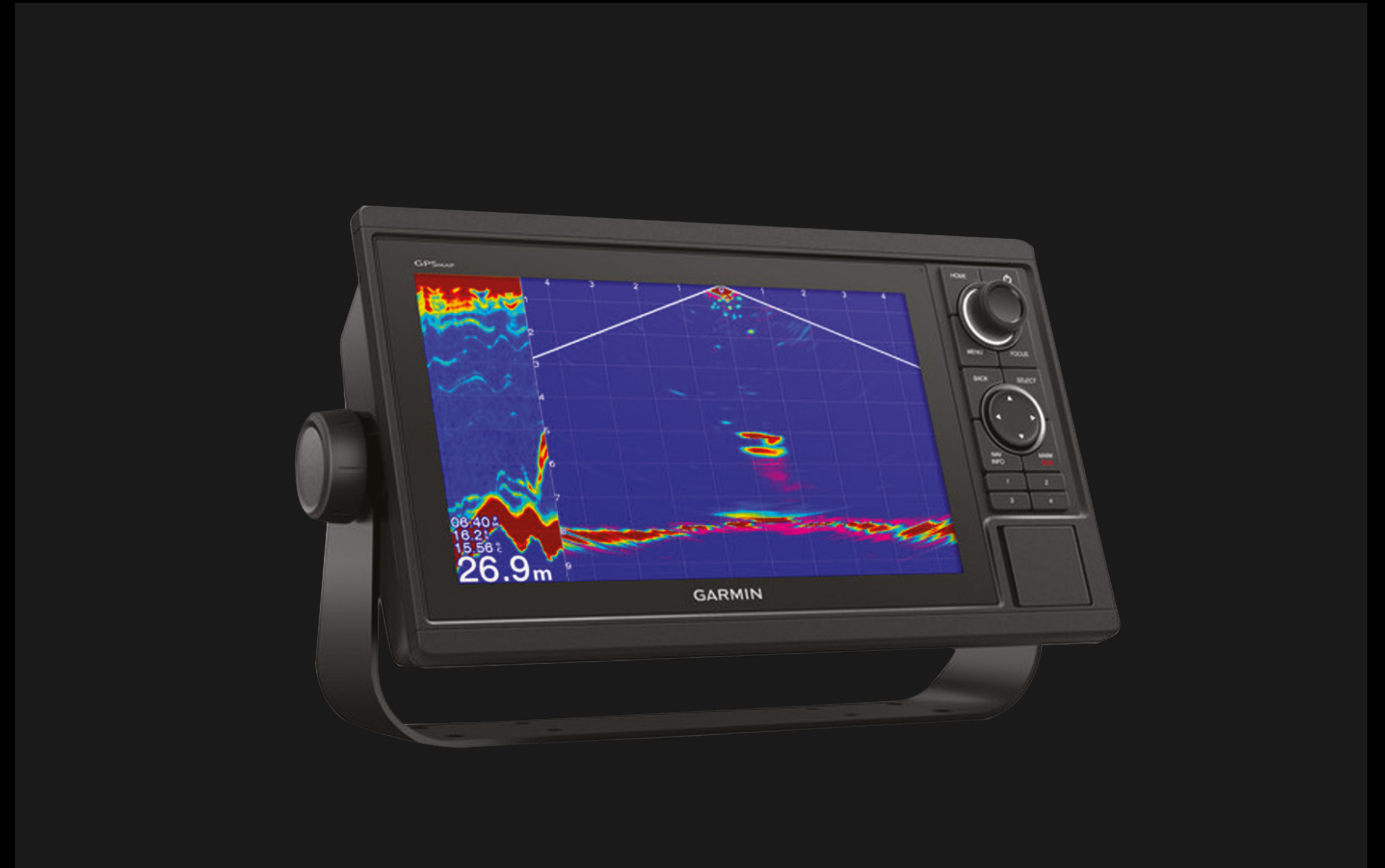
ACTIVE TRIM CONTROL

Automated interceptors optimize the trim at every speed to maintain ideal hydrodynamics for performance and efficiency, at the same time negating any lateral imbalance due to sidewinds or weight distribution. With the pilot's peace of mind assured, the driving experience is simpler and more enjoyable.



INTEGRATED CONTROL AND MONITORING SYSTEM

The custom-installed Garmin electronics have been integrated to control and monitor every onboard system: from engines and alarms, to bilge and water discharge pumps, tank levels and engine room ventilation, right through to the sound system and the air conditioning units. The system can be accessed on board from both the interior and exterior helm stations and, with the mobile app, remotely from a tablet or smartphone.



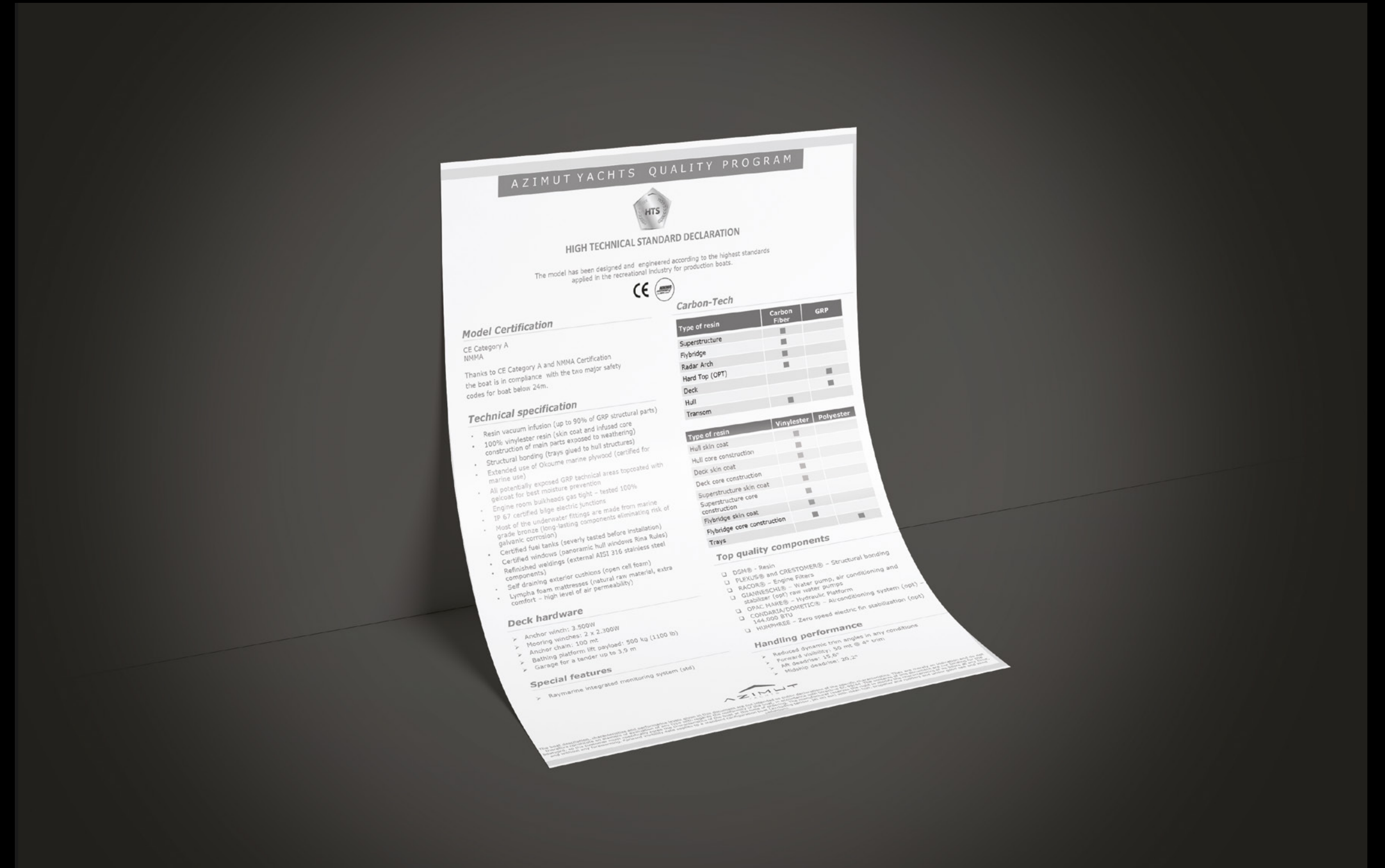
ADVANCED JOYSTICK CONTROL

The Joystick acts as an analog for the yacht, offering intuitive, one-handed control in every situation. When the yacht is stopped, moving the Joystick forward or back, side to side, and twisting clockwise or counter-clockwise activates the engines to mimic that motion. It's the easiest way to pull off precise maneuvers. When Joystick Driving is activated, the autopilot is immediately engaged. For easy course correction, the driver may briefly twist the Joystick for 1 degree in that direction or twist and hold for 10 degrees. The Autopilot keeps a forward course after the Joystick is released.



HIGH TECHNICAL STANDARD DECLARATION

This yacht's design and engineering meet the highest standards for production recreational vessels. Azimut Yachts issues a declaration of the premium materials, advanced technology and rigorous testing procedures.



04

SS8

SPEC SHEET

GENERAL CHARACTERISTICS

LENGTH OVERALL	24,63 m	80' 10"
BEAM MAX	5,55 m	18' 3"
DRAFT	1,75 m	5' 9"
DISPLACEMENT	57,68 t	127161 lb
ENGINES	3 x VOLVO IPS 1350 (1000 hp)	
MAXIMUM SPEED	up to 34 kn	
CRUISING SPEED	up to 28 kn	
KEEL	V Planing - Deadrise 14° at the stern - Deadrise 20° amidships	
FUEL CAPACITY	4000 l	1057 US Gal
WATER CAPACITY	1100 l	291 US Gal
CABINS	4 + 2 crew	
BERTHS	8 + 2 crew	
HEAD COMPARTMENTS	4 + 1 crew	
BUILDING MATERIAL	Carbon fibre + GRP	
EXTERIOR DESIGNER	Alberto Mancini	
INTERIOR DESIGNER	Yachtique	
BUILDER	Azimut Yachts	
HULL DESIGNER	P.L. AUSONIO Naval Architecture & Azimut R&D Dept.	
CERTIFICATIONS	CE A; NMMA	

- Main technical features

- LOW EMISSION YACHT
- ACTIVE TRIM CONTROL
- ADVANCED JOYSTICK DRIVING
- CARBON-TECH GENERATION
- INTEGRATED CONTROL AND MONITORING SYSTEM
- HIGH TECHNICAL STANDARD DECLARATION

Last updated 5.2025
Please consult your dealer for the latest specifications.

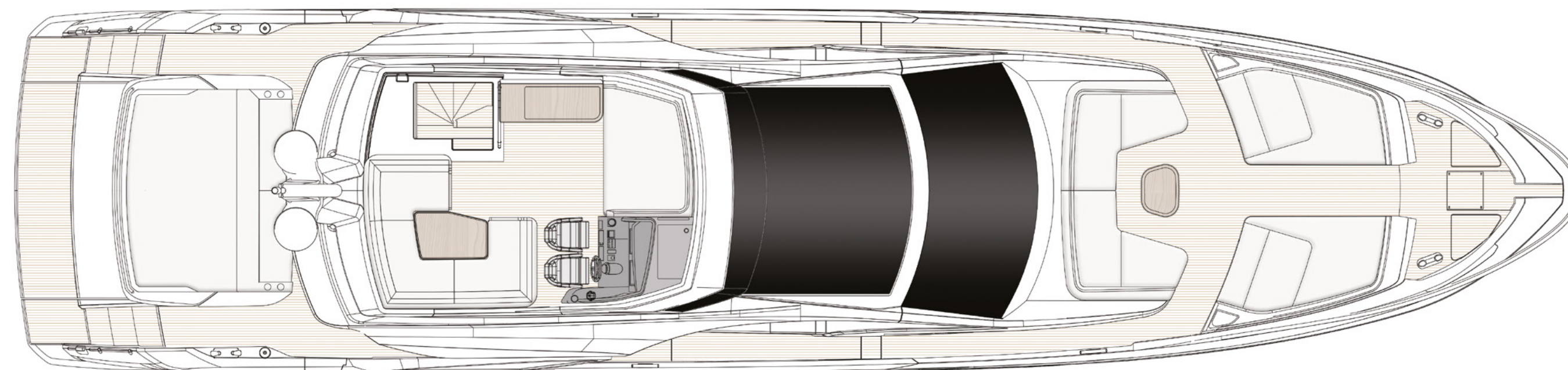
UNI ISO 8666

The performance described applies to a vessel with standard configuration (standard equipment installed) and a clean hull, propellers, and rudder. It is also noted that the performance described was recorded under favourable sea and wind conditions (Beaufort scale index 1, Douglas scale index 1); different and worse sea conditions could significantly impact performance.

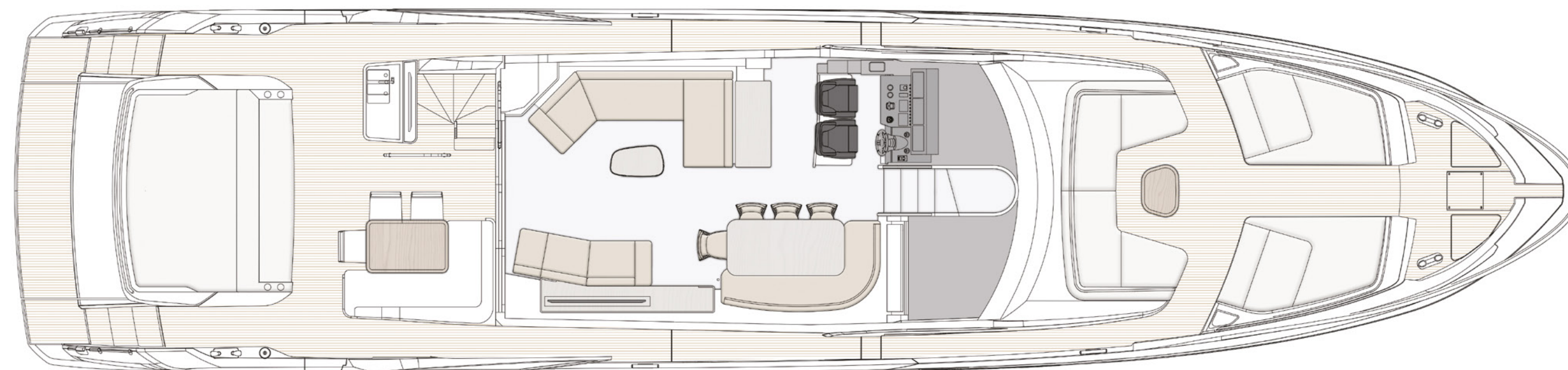
CE MARK

Given the continual evolution of technology, Azimut | Benetti S.p.A reserves the right to modify the technical specifications on its vessels at any time and without prior notice.

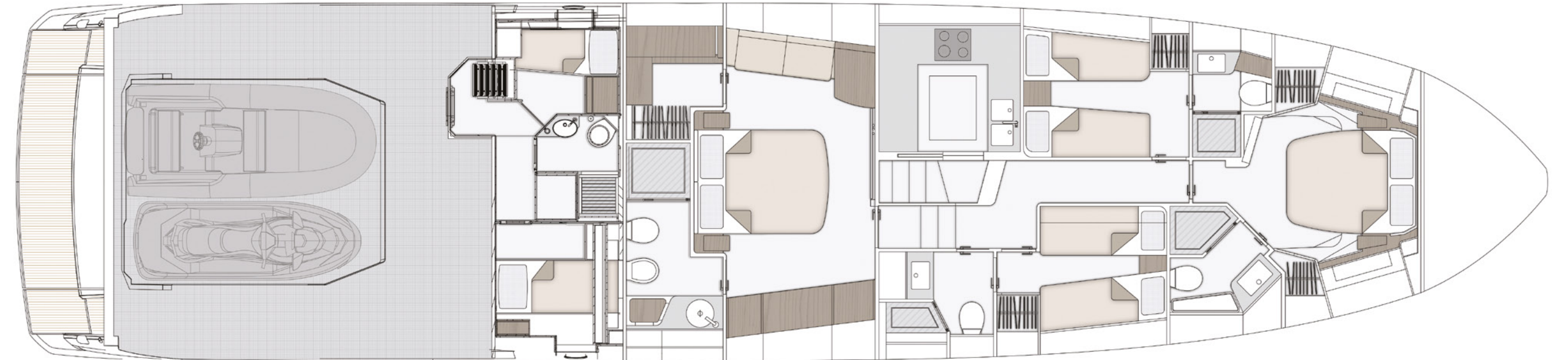
SPORT FLY

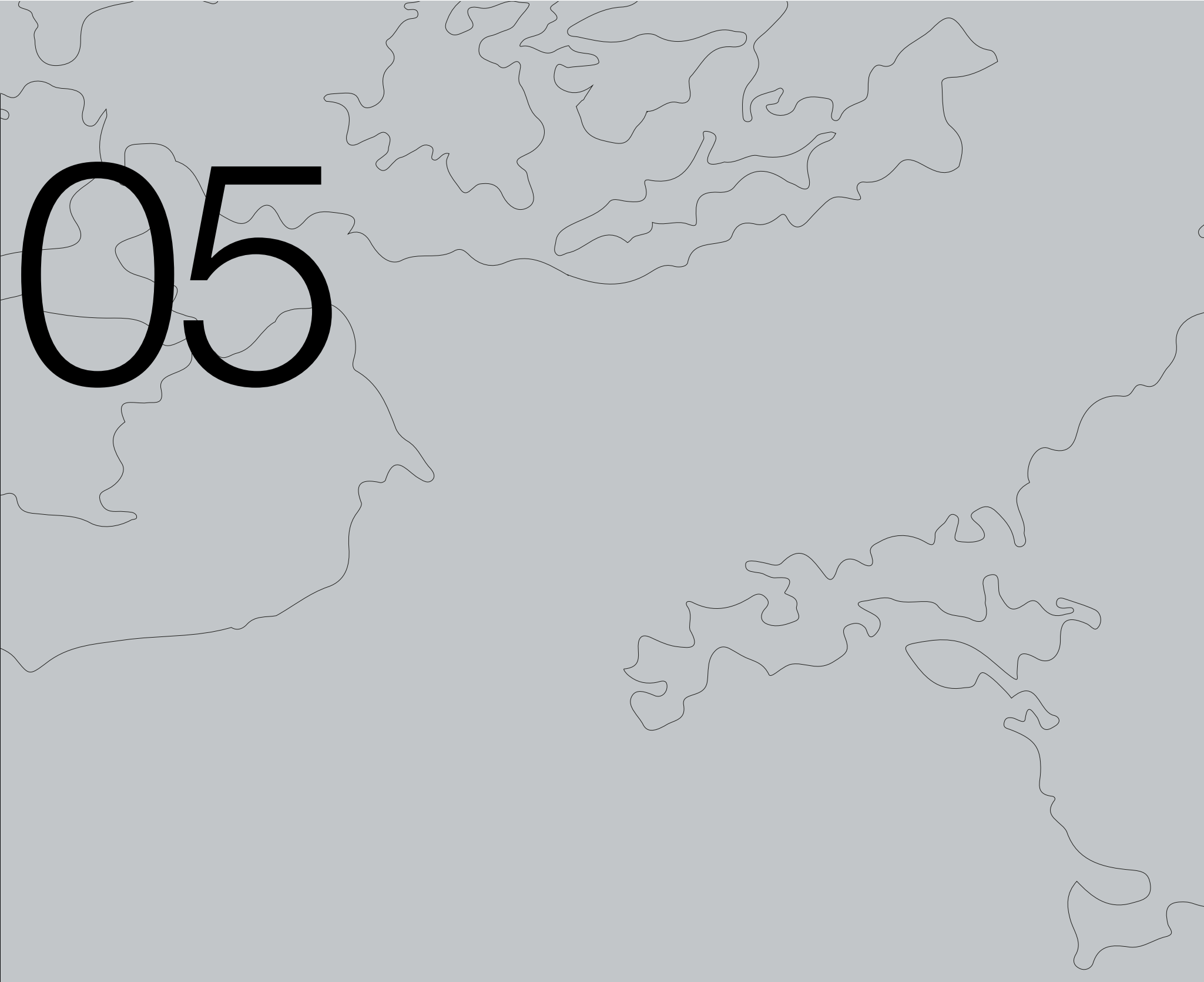


MAIN DECK



LOWER DECK





05

THE SERIES

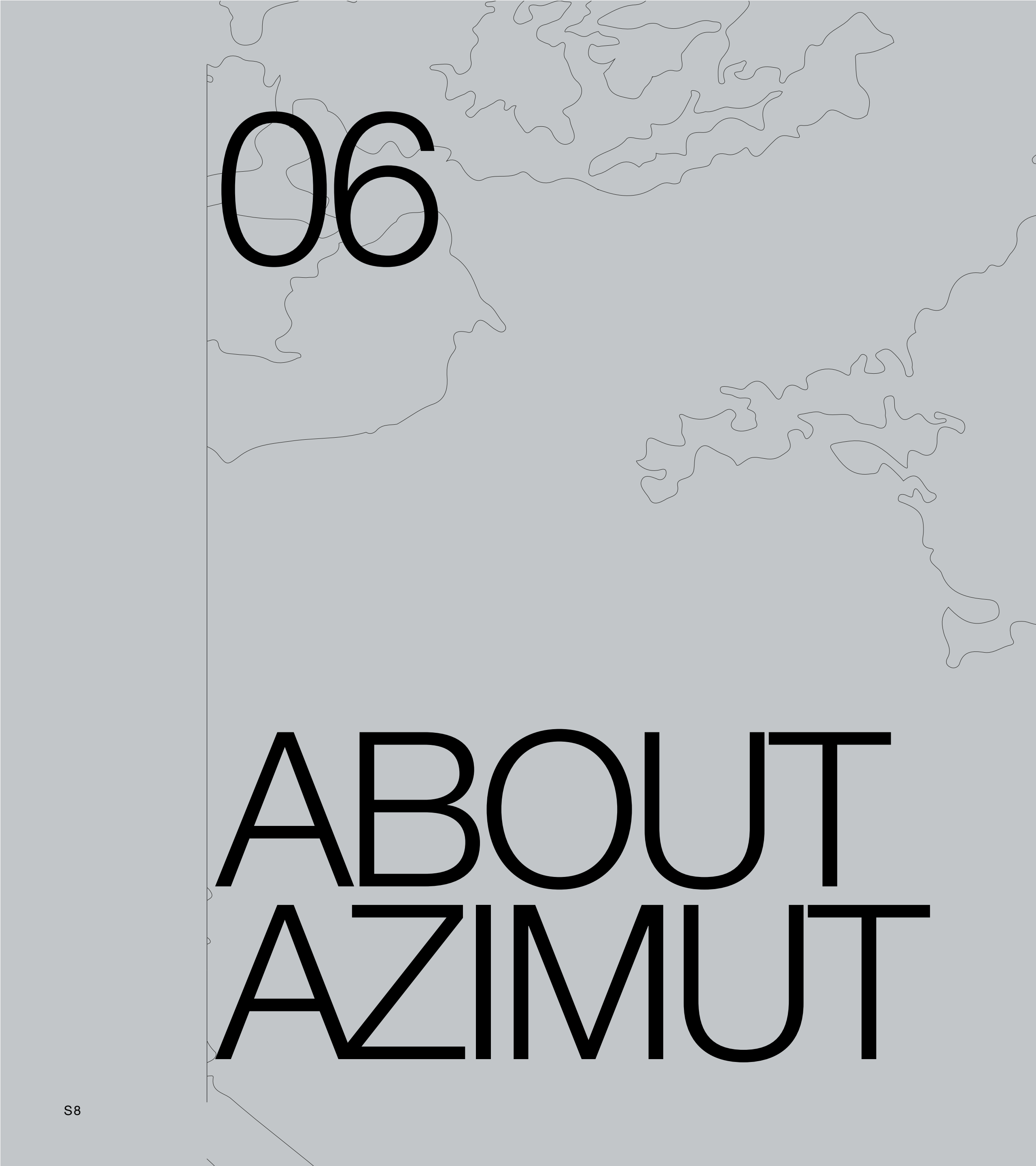
AVANT-GARDE INTELLIGENCE

The seductively sportive Azimut S Series is the market's pinnacle of technological advancement and performance. Sensually streamlined exteriors make for a fiercely dynamic aesthetic, combining with innovative propulsion systems and last generation hulls to deliver a uniquely sporty experience. Daringly fusing high speed and extreme manoeuvrability with the lowest consumption of fuel achievable in its class, the S Series also makes extensive use of carbon fibre on its yachts to grant vast volumes without impacting on weight, therefore offering unanticipated ample living spaces.

Embrace the beauty of avant-garde intelligence.

S6
S7
S8
S10





06

ABOUT AZIMUT



A FAMILY-MADE COMPANY CULTURE

An immense and personal passion for the sea. A clear and forward-facing attitude. A strong and relentless work ethic. Since 1969, Paolo Vitelli, the creative visionary founder and businessman behind Azimut, has been set on challenging the industry's status quo with a daring desire: bring to life an unexpected nautical experience, through yachts built to combine alluring aesthetics with construction expertise and impeccable technology.

An audacious mindset that has, over time, surprised and captivated the yachting sector, transforming Azimut into a bold and recognizable benchmark, and laying the foundation for the birth of the largest megayacht builder in the world, the Azimut | Benetti Group.

The international and management-based standing of the company today, is deeply nourished by the solid and memorable family heritage that has distinguished it from the beginning. A historically pioneering vision that enables it to continue thriving day after day, through ingenious inventions and long-term goals that look to the future with Paolo's daughter, Giovanna Vitelli.

A SUSTAINABLE VISION TODAY, FOR TOMORROW

An avant-garde vision and a strong emotional appeal have shaped the history of Azimut as a leader in the field of nautical innovation as well as its commitment to the creation of a sustainable-oriented and attentive company culture today.

An ambitious and personal touch that has allowed Azimut to grow and evolve on both levels, embracing the challenge of a future nurtured by an eco-conscious approach to boat construction and by an authentic focus and responsibility on human well-being.





OUR ♻️ ECO-YACHTING PHILOSOPHY

The Azimut I Benetti Group has made tangible investments to guide the Technical as well as the R&D departments toward the construction of yachts with a diminished environmental impact. Its main areas of intervention have focused on significantly lowering fuel consumption and CO2 emissions through the development of highly efficient hull designs, innovative propulsion systems and an extensive use of carbon fiber to decrease yacht weight.



A SAFE AND HEALTHY WORK ENVIRONMENT

The forerunning shipyard of Avigliana was the first of the company's Italian shipyards to obtain the ISO 45001 certification in 2011, attesting its rigorous abidance to all occupational health and safety requirements. Recognized as the most technologically-advanced shipyard in Europe, it has also led the nautical sector revolution in terms of being among the earliest adopters of the vacuum infusion process to drive resin into a laminate, avoiding styrene emissions and therefore guaranteeing its precious workers a healthier setting.

As of 2013, all the other Italian production sites have adapted to meet the necessary requirements to obtain the ISO 45001 certification.



A GLOBALLY-CONNECTED DEALER AND SERVICE NETWORK

5 SHIPYARDS

6 DIRECT OFFICES

138 OFFICIAL DEALERS

80 COUNTRIES

The highly widespread commercial network put in place by Azimut Yachts, allows the company to offer a continuous presence to its ship owners, concretely curating their demands by meeting their most specific needs.



THE LARGEST PRIVATE GROUP IN THE YACHTING WORLD

Azimut is part of the Azimut | Benetti Group, the biggest private player and shipbuilder in the nautical sector today. The Vitelli family, the founder and majority shareholder of the company, has been leading the way for over fifty years now, continuing to innovate through the Group's main yacht brands, Azimut and Benetti, while developing a variety of service brands to cater to the different demands of ship owners worldwide.



OUR SHIPYARDS MAKE US PROUD

Avigliana — Italy

HQ / SHIPYARD

Savona — Italy

DELIVERY CENTRE

Viareggio — Italy

SHIPYARD / STYLING LOUNGE

Fano — Italy

SHIPYARD

Itajaí — Brazil

SHIPYARD





CONCEPT & DESIGN: APART
PHOTOS: GIOVANNI MALGARINI, ALESSANDRO GUERRIERI

AZIMUT YACHTS THANKS: APR LUXURY LINEN, LORO
PIANA, VIBIA, GIORGETTI, SALVATORI, GIORGI & GIANNONI,
GIOBAGNARA, KOONESS

OFFICIAL PARTNERS



GARMIN.

NAVICO
GROUP

Raymarine

SEAKEEPER

VOLVO
PENTA

AZIMUT | BENETTI SPA
VIA MARTIN LUTHER KING, 9
10051 AVIGLIANA, TORINO
ITALY

RELEASE 5.25

This brochure in no way constitutes a contract of sale for the boatyard's vessels to any person or company. All information contained herein, including but not limited to technical and performance data, illustrations, and drawings, is non-binding and for purposes of illustration only. The information in this brochure refers to the boatyard's standard motoryacht models available as of the date of publication. Technical and descriptive information is valid only to the extent that it pertains to the specific vessel that is the subject of a purchase. Contract terms are valid only to the extent that they are contained in a contract of sale. This document is based on information available at the time of publication. Despite efforts to ensure the greatest possible accuracy, the information contained herein may fail to cover all details, omit technical or commercial changes that may have been made subsequent to publication, describe features that are not present, and fail to envisage all circumstances that might occur. Any illustrations, photographs, diagrams and examples shown in this brochure are included solely for the purposes of illustrating the text. Due to the different features of each vessel, the boatyard assumes no liability for actual use based on the illustrated applications.

AZIMUT

azimutyachts.com

