

TRIDECK

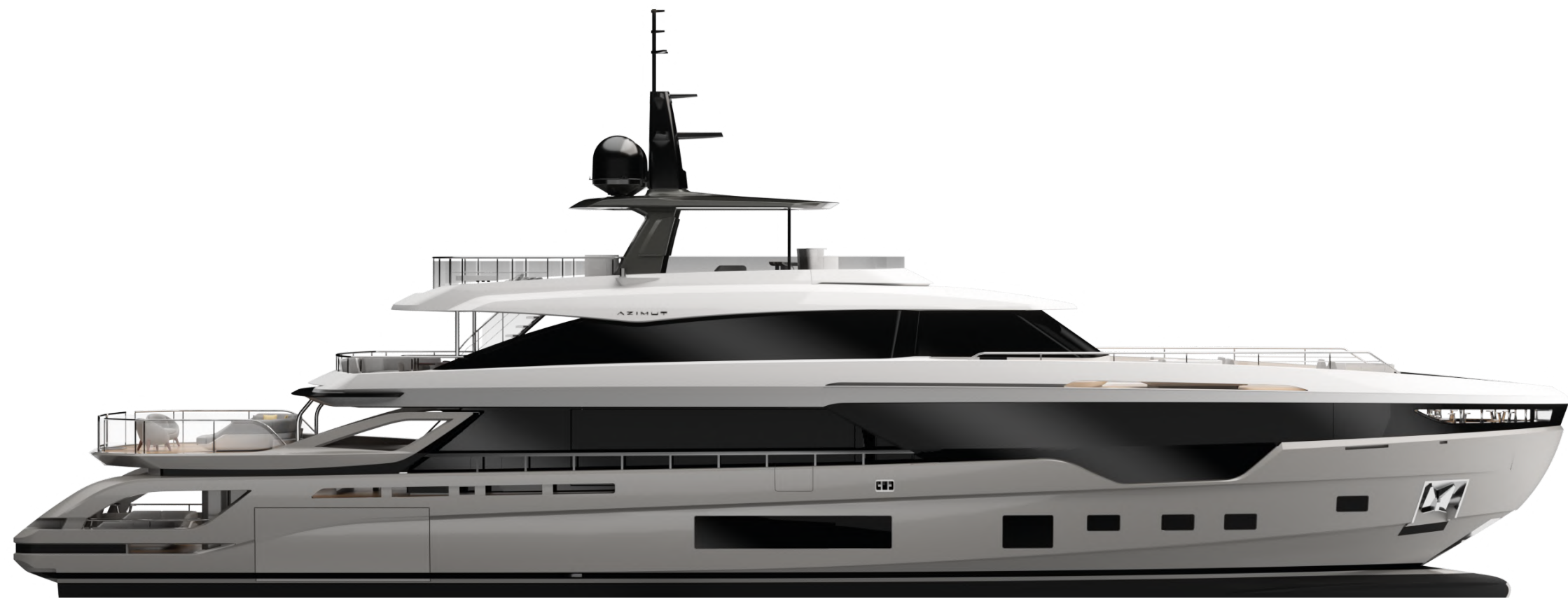
^ZIMUT

GRANDE
TRIDECK



INDEX

01	THE DESIGN & LIFESTYLE ON BOARD	P04
02	HER MAIN TECHNICAL FEATURES	P49
03	GRANDE TRIDECK SPEC SHEET	P54
04	THE GRANDE SERIES	P60
05	ABOUT AZIMUT	P62



A one-of-a-kind beauty, enrapturing, that steals your breath away, leaving you speechless. An extraordinary idea as the only possible pathway, to get to where you want, to explore, to go beyond.

The freedom of embracing the unknown, that you know you'll love as a part of your very own story. A thought that provokes your mind and then inspires you to aim for the impossible, making mistakes, yet being brave.


A magic je ne sais quoi that enchants and intrigues you, moving you to feel more and to sense uniqueness.

The choice to risk it all, the one that makes you go for it, to impress yourself and all those who are worth it.

Welcome to Azimut.

AZIMUT.
DARE TO AMAZE.





01

THE DESIGN & LIFESTYLE ON BOARD

GRANDE TRIDECK, A GRAND SEA PERSPECTIVE

The highly innovative aesthetic of the Grande Trideck gives traditional onboard spaces an unexpected twist, expanding the boundaries of the classic triple-decker concept.

By boldly redefining all ambiances, the novel 'three decks + one' ideal integrates a breathtaking half-raised aft deck, providing an ensemble of four cascading terraces for a uniquely dynamic and sea-immersive effect.

Experience the sublime sea spirit of the Grande Trideck.



[The first triple-decker and the largest boat ever built by the shipyard, the Grande Trideck is 38.2 meters long and 7.9 meters wide.]



[The designer sculpted the hull with a rib that starts from the stern, at the height of the exhausts and extends to the bow, giving tension to the profile.]

Welcome aboard, ladies and gentlemen.

Let us begin the tour.



SHE EXPRESSES SCULPTURAL ELEGANCE



[A modern stylistic language also seen in car design lightens the external lines, restoring a feeling of dynamism.]

The lines of the Azimut Grande Trideck are modern, refined and clearly contoured. Her 38-meter long silhouette neatly expresses the large volumes of a stately flagship. Silently concealing them in an interplay of solid and voids, she evokes a feeling of floating lightness. Naturally embodying Azimut's sense of dynamism, the exterior designer Alberto Mancini intervenes by applying his car design know-how to evolve the expected standard, forging a new nautical language inspired by the future.



THREE DECKS +ONE, PURE FREEDOM

The luxurious layout liberates life on board, interpreting the environment and the spaces anew through a fascinating sequence of cascading terraces. The four incredibly innovative, sea-bound spaces are each set on a different level of the Grande Trideck, creating a staggered deck concept that contributes to the expression of a bold and dynamic boat design. From the stunning Sea View Terrace to the elegant private patio and the lively beach area just above the sea's scintillating surface, the Three Decks + One solution is a flexible and deeply enveloping ocean experience.







[The “Three Decks + One” design concept features four cascading terraces, unique in function, size and flexibility.]

BREATHTAKING OPEN-AIR BEAUTY



The stage-like Sea View Terrace is born to overlook the marine panorama from a uniquely privileged point of view, suspending spectacularly over the water.

At the same time, the superior sundeck makes for a perfectly relaxing sunbathing area, while the upper deck below it boasts the main outdoor dining area. Last but not least, the beach area beautifully and naturally connects the guests with the water and their natural surroundings.



[The Sea View Terrace is a floating aft deck of 30 square meters that precedes the traditional cockpit, 2 meters above sea level.]

THE PLEASURE OF PRIVACY

Nestled between the Sea View Terrace and the entrance to the salon, the main deck delivers another particularly surprising space: the refined and reserved private patio. An extension of the indoor living ambience as well as a protected outdoor zone, this creative and intimate environment encourages conviviality through easy-going lunching, dining or lounging moments. Its soft colors and contours live alongside minimal but sensual accents, such as the moon-like surface circular elements in the ceiling, the bar cabinet featuring a Carrara marble top with a built-in table lamp and the herringbone pattern wooden floor with brass inserts.





[The Private Patio offers an additional outdoor sheltered area before entering in the salon, for total intimacy even when moored stern-to.]



[The beach area offers 2 meters of headroom and is usable in all its width thanks to the separate garage for tenders and toys. The hinged transom can open to increase the available surface to more than 30 square meters.]





[The main outdoor dining area, aft of the upper deck, develops around a square table extendable to seat up to 12 people.]



[The sundeck offers a large sunbathing area at the stern and includes: opposing circular sofas, a table for lunch in the center and towards the bow, and an American-inspired bar with a large barbecue.]



GRANDE TRIDECK



AZIMUT YACHTS



GRANDE TRIDECK



AZIMUT YACHTS

FUNCTION AND STYLE, ESSENTIALLY REIMAGINED

The concept of the interior ambiances, the furnishings as well as every design element, are all conceived by designer Achille Salvagni. Inspired by the elemental essence of water, a renovated vision of functionality and style reimagines the role of space to embrace a natural way of life on board. A wholesome and organic sensation that brings together interiors and exteriors, blurring the lines between them to transform them into a harmonious continuum.







[Moving the main indoor dining area from the main deck to the upper deck is a natural progression of the designer's concept for the interiors.]

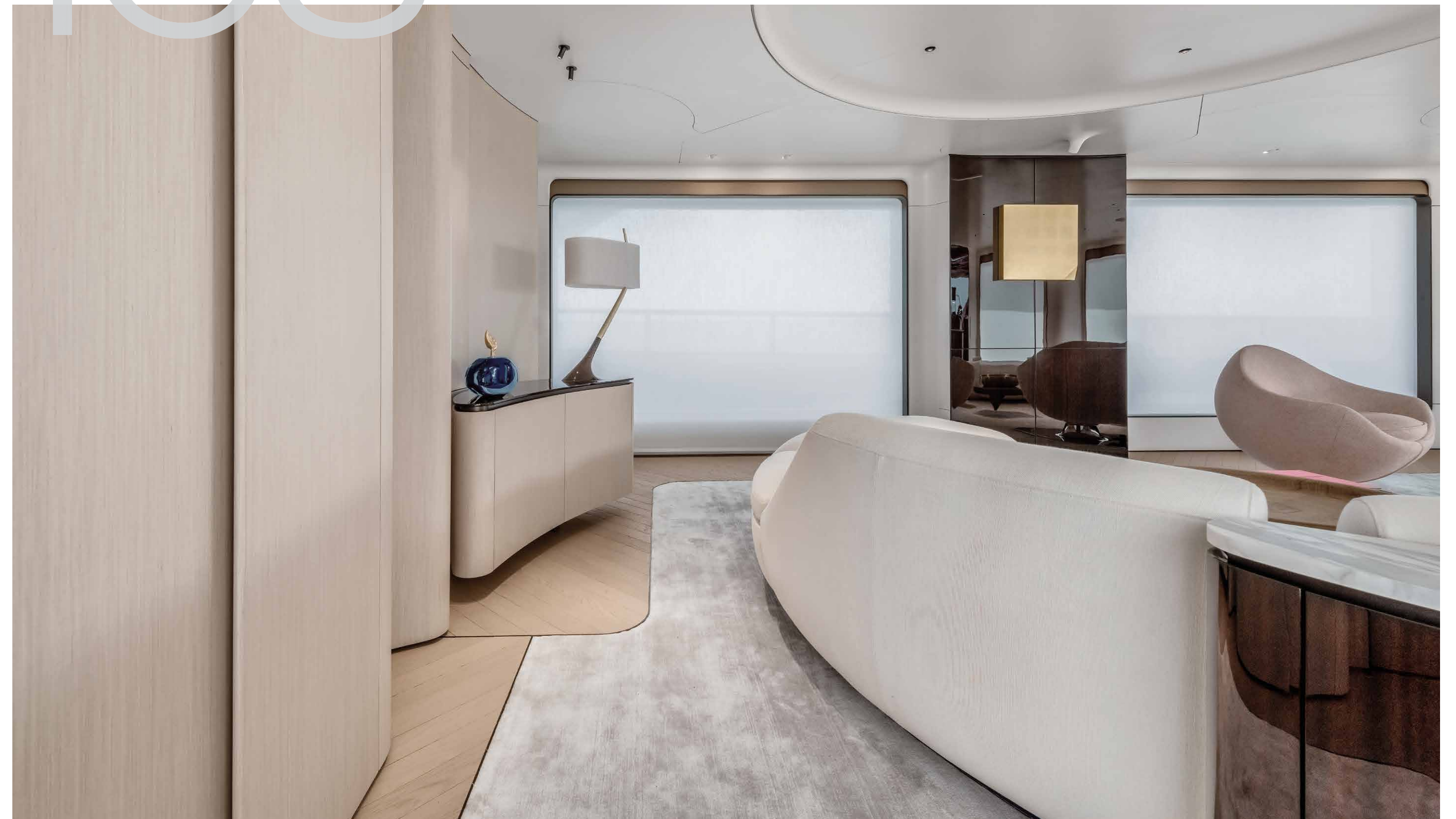
AN ENSEMBLE OF FLOWING AMBIENCES



Ambiences are gracefully redefined through the adoption of a fluid and streamlined style, leaving behind traditional ideas and preconceived constraints of typical spatial divisions. Purity and cleanliness characterize every line, while the subtlety of a peaceful palette intensifies the feeling of relaxation.

ABSOLUTE AESTHETICS

As a detailed continuation of the reinvented spatial integrity on the Grande Trideck, the design-oriented attitude of every element exposes a liquid-like and essentialist soul. Every intervention occurs to remove the superfluous, focusing on a profoundly artisanal identity to enhance the architectural quality of the surroundings and the preciousness of the loose furniture through noble materials and special finishes.



[Every single piece of furniture on board is specially-designed, the superfluous removed so as to let tactile and visual pleasure define the living areas.]





[Every detail, even the lamp, is designed ad hoc for this project.]

A NATURAL MULTI-PURPOSE PHILOSOPHY



All exterior and interior living areas are conceived as light-filled and airy settings with authentic adaptability in mind. The multi-purpose intention of the ambiances is designed to meet the contemporary demands of a less formal lifestyle on board, resolving the daily requirements of different guests on the Grande Trideck.



A VERY VERSATILE SKY LOUNGE

The upper deck manifests a sense of pure possibility, presenting a full-width sky lounge designed to unfold lifestyle freedom. This convertible area can quickly be transformed into a formal but cozy indoor dining area for up to 12 guests or be used for an exciting cinema soirée as it is also equipped with a 55" pop-up flatscreen.





[The sky lounge is conceived as a multi-purpose zone. The table can be raised and extended to serve as the main indoor dining area.]

Now let us discover the guest accommodations.

Shall we?





The sense of openness suggested by the seamless spaces already encountered throughout the Grande Trideck continues into the sleeping quarters. Aesthetic finesse is played out by the delicacy of liquid-like lines, sustained by rich and fascinating design elements making for an extra-charming experience.



SOFTLY BLENDING ATMOSPHERES

An encompassing sense of harmony rules the master suite. In a specially curated concoction, the atmosphere gently combines a warmly accommodating area embellished by a polished feel and suspended furnishings with an evolved concept of wellness. As a natural extension of the cabin, the bathroom evolves the idea of comfort and relaxation, evoking a sensation of pervading pleasure.



[The main material is neat tay wood contrasted against a polished mahogany, while the floor proposes a textured Cardoso stone.]



[The suite is divided into different areas only conceptually, further inspiring a cross-pollinated style and living experience.]

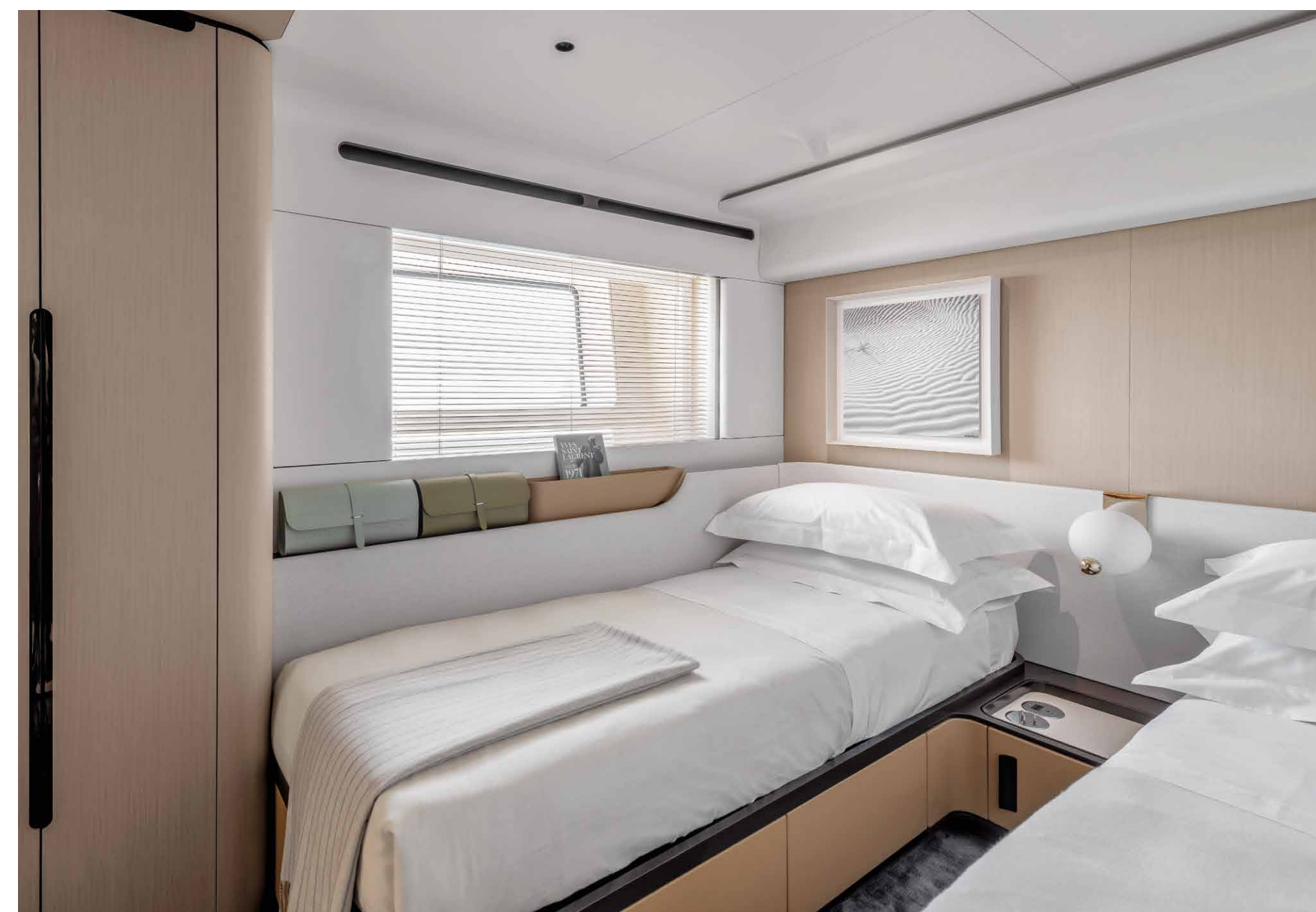
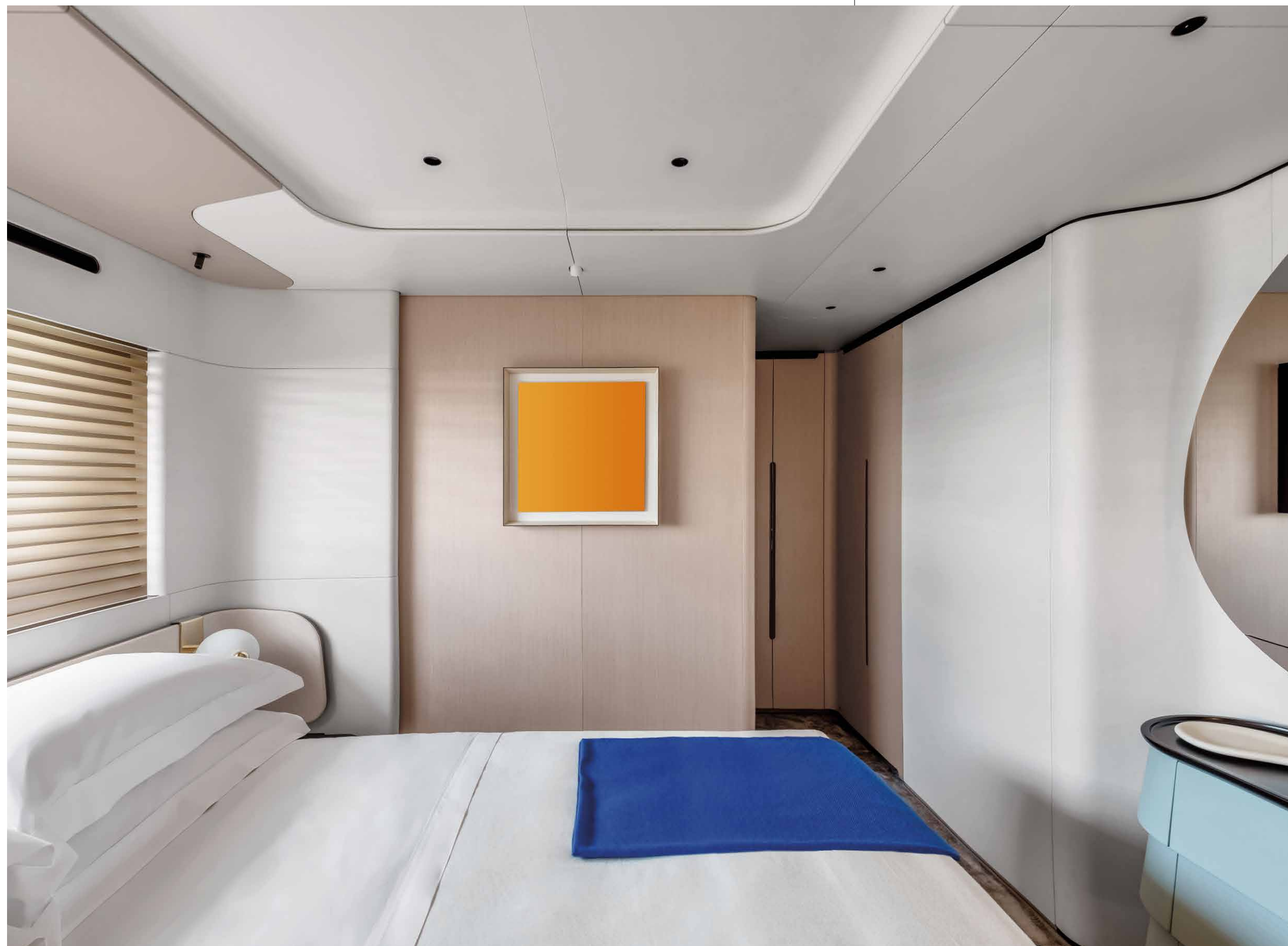


FLUID AMBIENCES









AN IMPRESSIVE VIP CABIN

The flexibility permeating the Grande Trideck concept, also allows for a 6-cabin layout which unexpectedly positions a VIP cabin on the upper deck. Through the presence of a large window, this special option frames a truly mesmerizing sea view.





GRANDE TRIDECK



AZIMUT YACHTS



GRANDE TRIDECK



AZIMUT YACHTS





GRANDE TRIDECK



AZIMUT YACHTS





02

HER MAIN TECHNICAL FEATURES

The beauty of the Grande Trideck is not solely a matter of exterior and interior design elements that combine to perfectly play out Azimut's essence. Her beauty lies also in discovering the technological advancements and special components that contribute to making her truly unique and highly innovative.



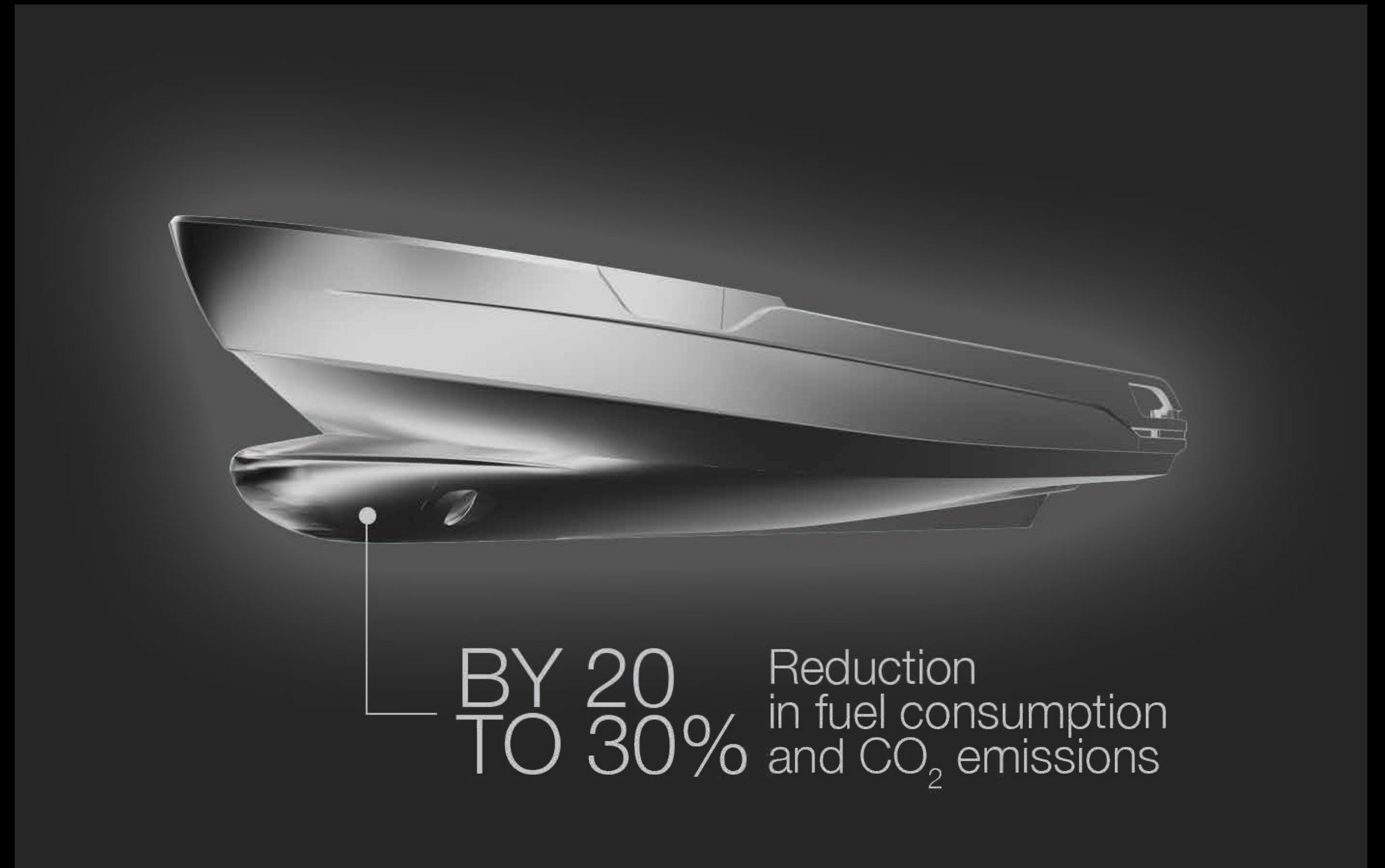
LOW EMISSION YACHT



D2P DISPLACEMENT TO PLANING HULL

The high-efficiency D2P® Displacement-to-Planing hull, combined with the extensive use of carbon fiber, reduces fuel consumption and CO₂ emissions by 20 to 30%* at both slow and fast cruising speeds. The double chine hull comes to a wave piercer at the bow, minimizing the impact of sea conditions while increasing the waterline length and therefore reducing drag.

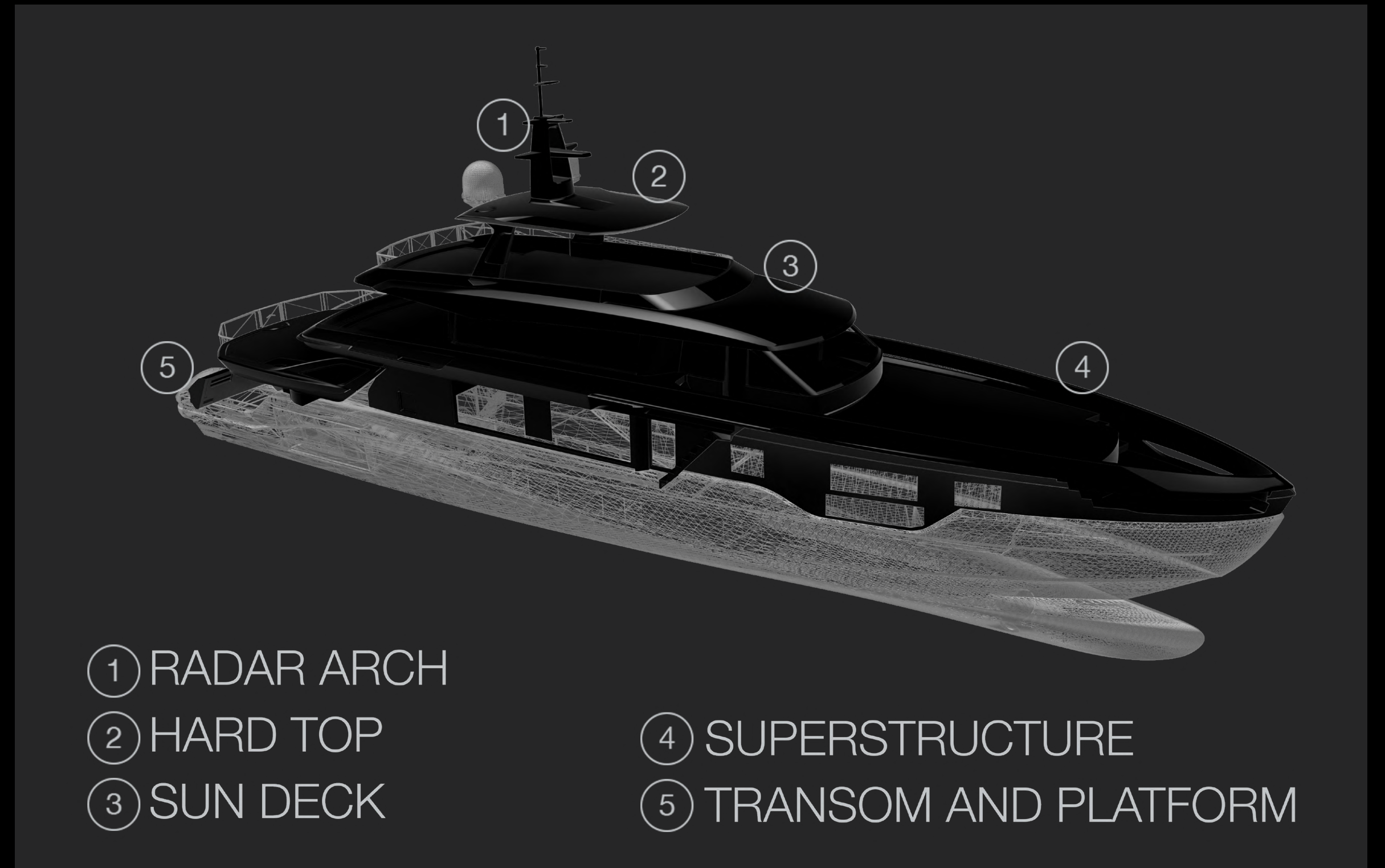
*compared to vessels of the same weight and size with a traditional hard-chine hull.



BY 20
TO 30% Reduction
in fuel consumption
and CO₂ emissions

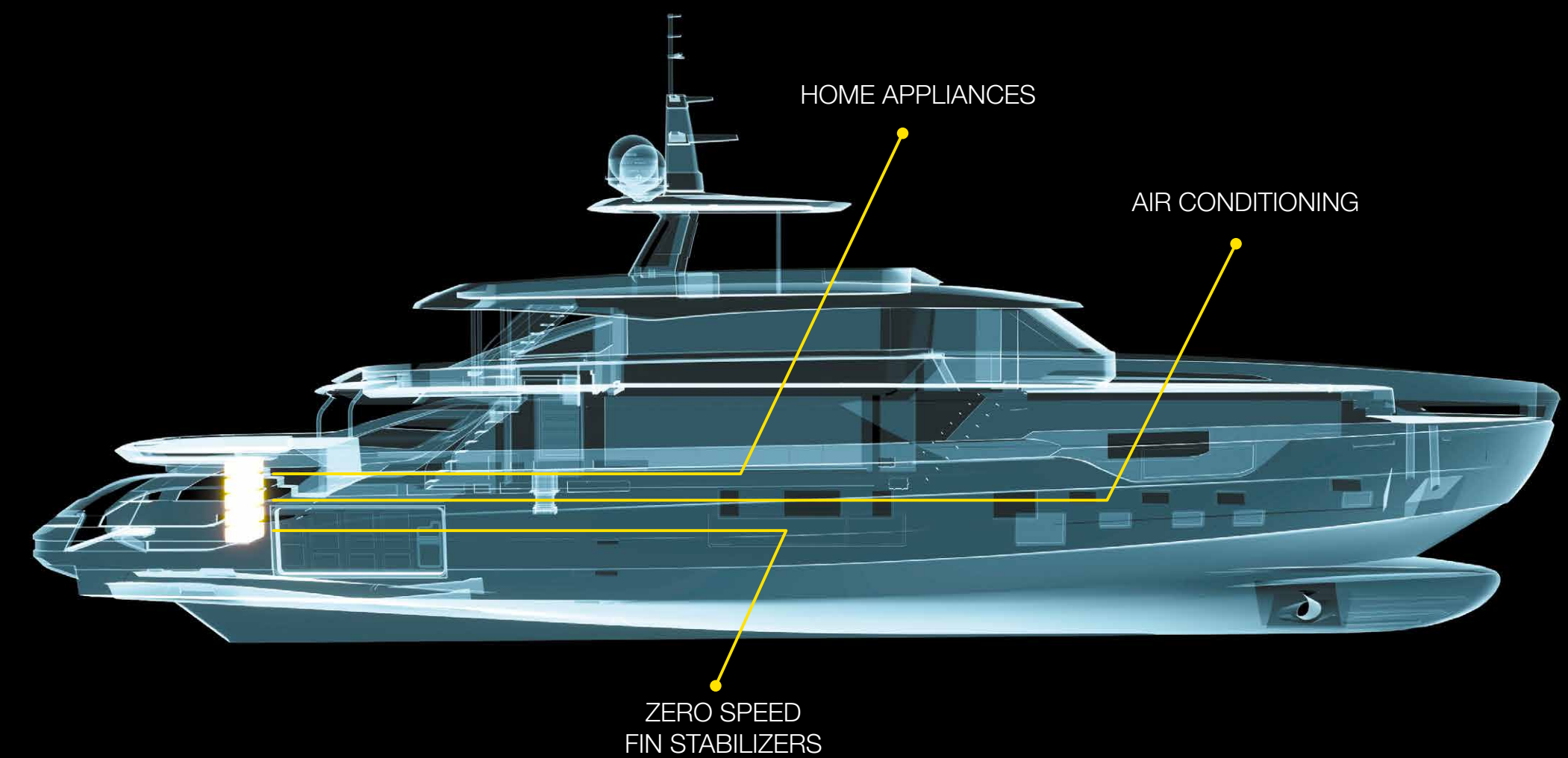
CARBON-TECH GENERATION

Azimut's pioneering use of carbon fiber lamination goes beyond pure performance. The Carbon Tech Generation offers expanded volumes on board, while maintaining excellent dynamic stability and perfect handling. Preserving the yacht's low center of gravity, the carbon fiber was focused on the upper parts of the yacht, lightening the laminated components by up to 30% and reducing the natural roll momentum up to 15%.



ZERO EMISSIONS HOTEL MODE

A 130kW/h lithium-ion battery pack can support the yacht's hotel load for up to 4 hours during the day and up to 8 hours at night. Now, it's possible to enjoy the full superyacht experience without the noise, vibration and emissions of the generators, making daytime activities more pleasant and nighttime relaxation more peaceful.



03

GRANDE TRIDECK SPEC SHEET

GENERAL CHARACTERISTICS

LENGTH OVERALL	38,22 m	125' 5"
WATER LINE LENGTH AT FULL LOAD	34,05 m	111' 9"
BEAM MAX	7,98 m	26' 2"
DRAFT	2,05 m	6' 9"
DISPLACEMENT	190 t	418874 lb
ENGINES	2 x 2400 hp MTU	2 x 2600 hp MTU
MAXIMUM SPEED	Up to 23/25 knots	
CRUISING SPEED	Up to 19/20 knots	
FUEL CAPACITY	22500 l	5944 US Gal
WATER CAPACITY	4000 l	1057 US Gal
SEWAGE AND GREY WATER	3500 l	925 US Gal
CABINS	5/6 + 4 crew	
BERTHS	10 + 6 crew	
HEAD COMPARTMENTS	7 + 4 crew	
BUILDING MATERIAL	GRP + Carbon fibre	
EXTERIOR DESIGNER	Alberto Mancini	
INTERIOR DESIGNER	Achille Salvagni Architetti	
HULL DESIGNER	P.L. Ausonio Naval Architecture & Azimut R&D Dept.	
BUILDER	Azimut Yachts	
CE CATEGORY	A	

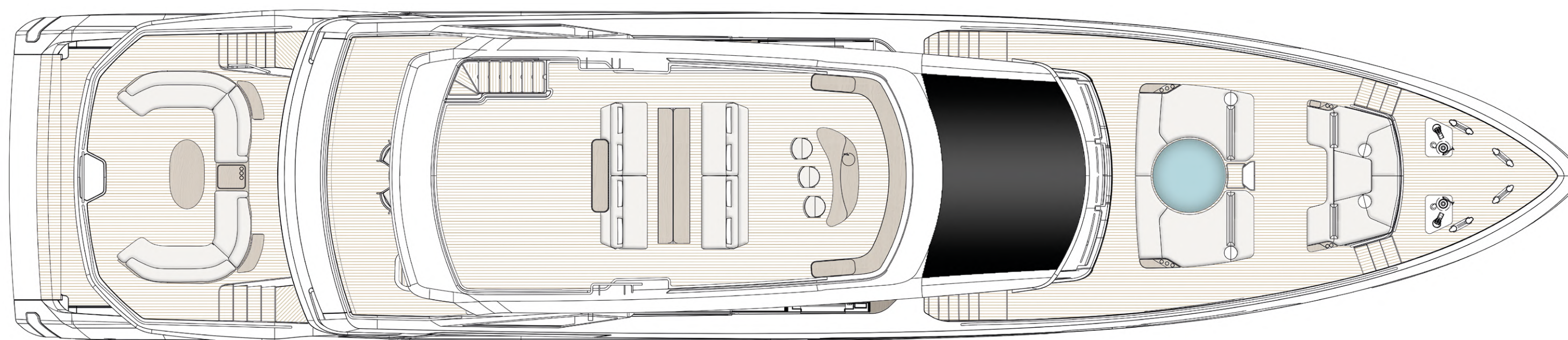
Last updated 04.2023
Please consult your dealer for the latest specifications.

UNI ISO 8666
The performance described applies to a vessel with standard configuration (standard equipment installed) and a clean hull, propellers, and rudder. It is also noted that the performance described was recorded under favourable sea and wind conditions (Beaufort scale index 1, Douglas scale index 1); different and worse sea conditions could significantly impact performance.

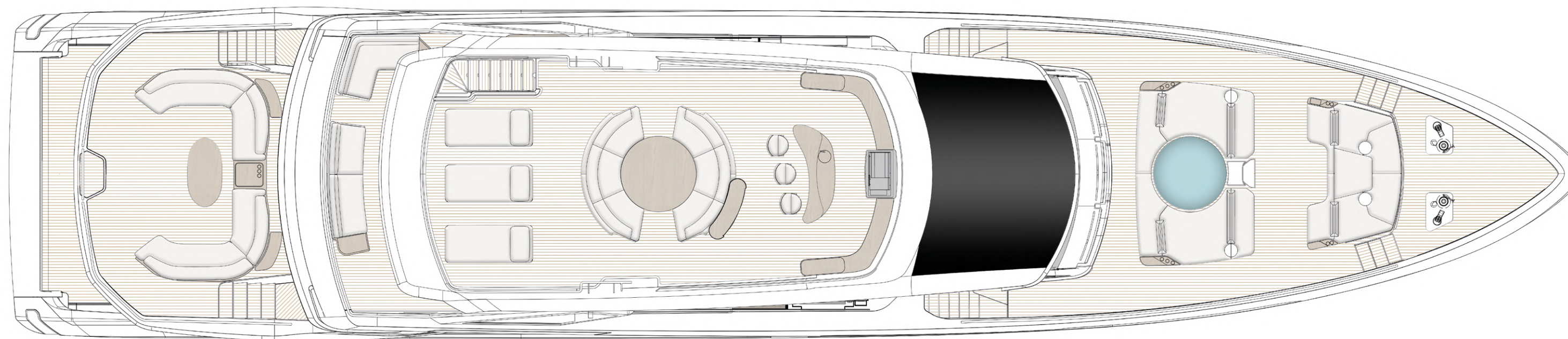
CE MARK
Given the continual evolution of technology, Azimut | Benetti S.p.A reserves the right to modify the technical specifications on its vessels at any time and without prior notice.

FLYBRIDGE

5 CABINS

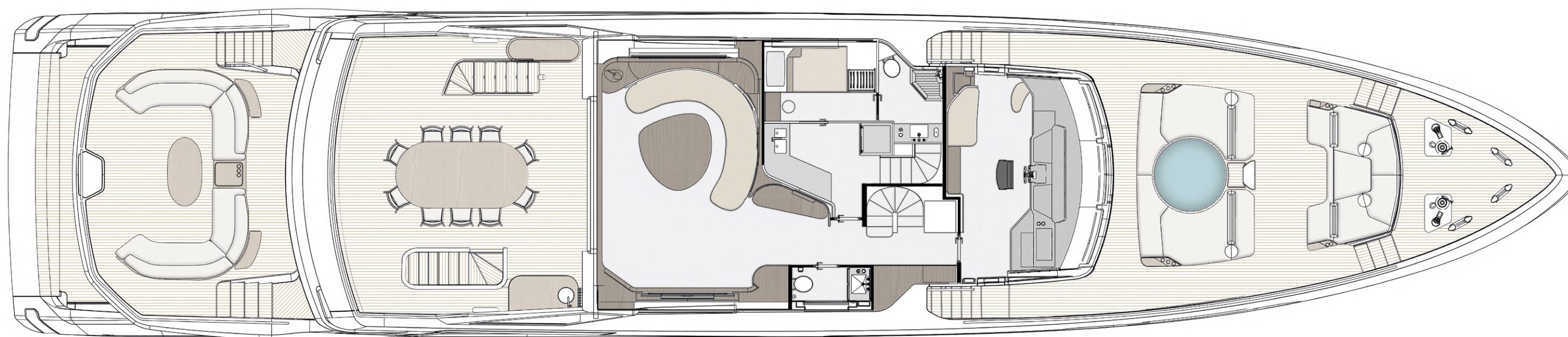


6 CABINS

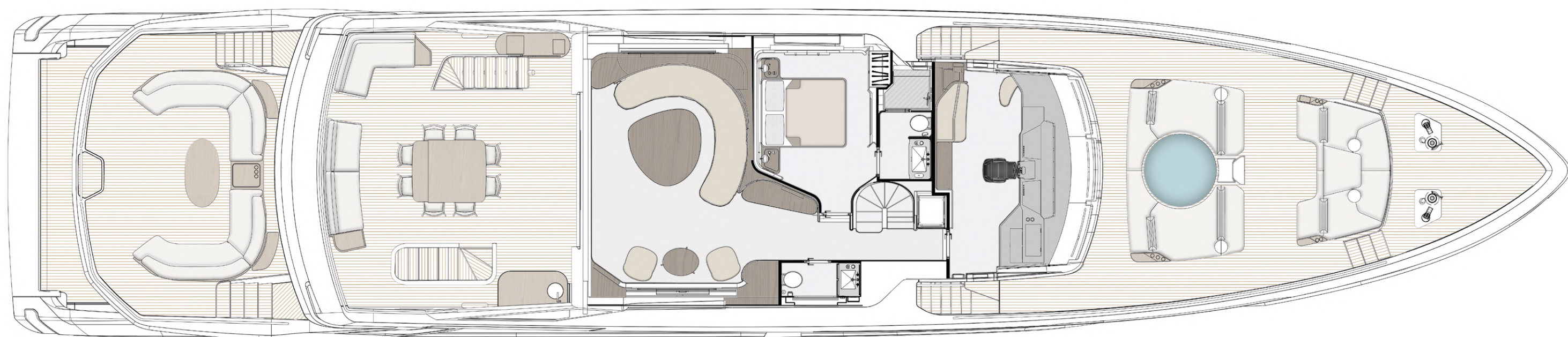


UPPER DECK

5 CABINS

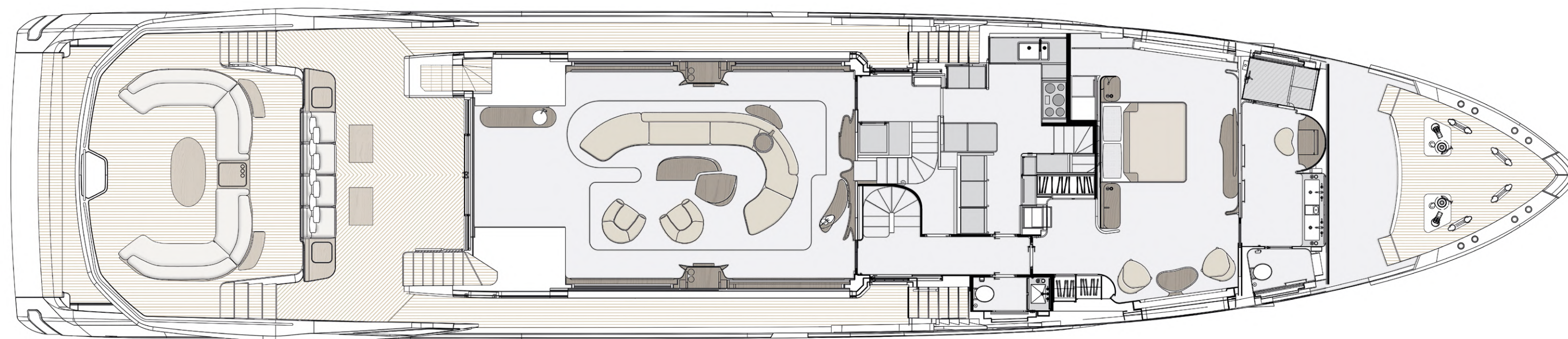


6 CABINS

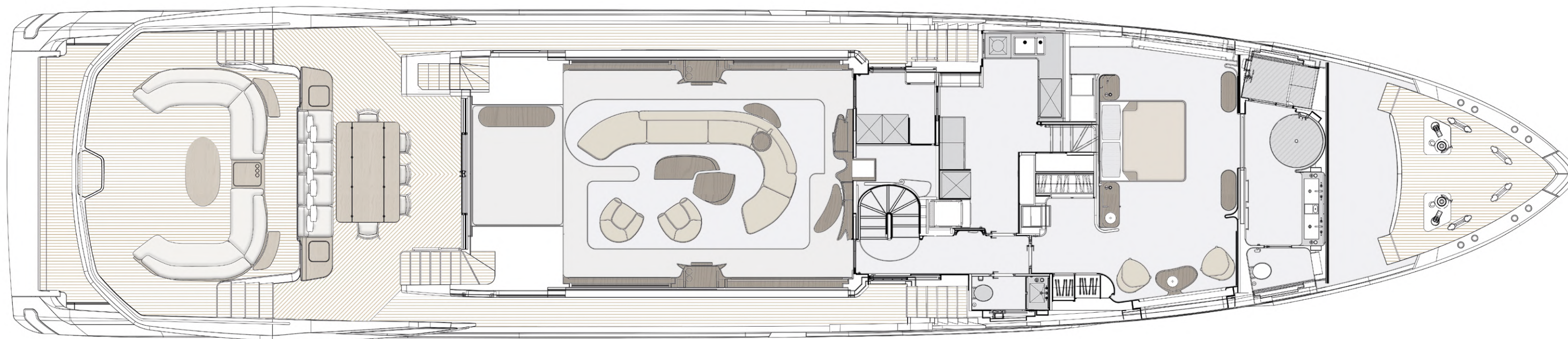


MAIN DECK

5 CABINS

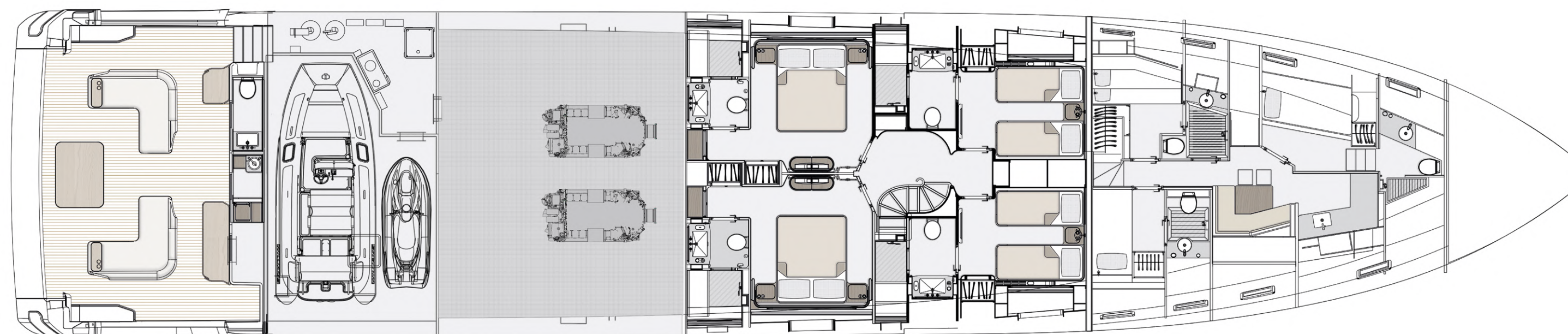


6 CABINS

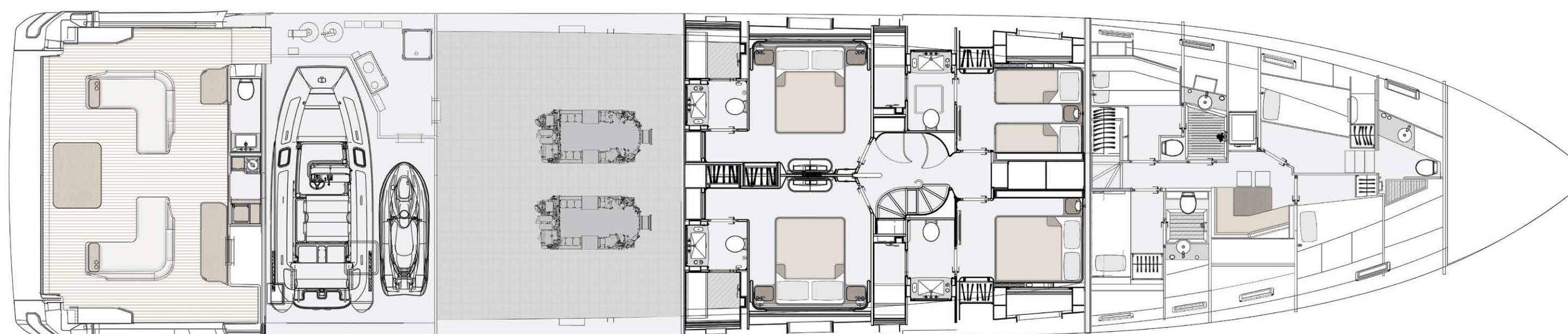


LOWER DECK

5 CABINS



6 CABINS





04

THE GRANDE SERIES

A FASCINATING VOYAGE THROUGH INNOVATION

Inspired by an affinity for grandeur, the Azimut Grande Series is a unique and emotional ensemble of Azimut's most pioneering inspiration and constructive flair, a spectacular collection of works of art that combines advanced technology with engineering mastery. Visionary design, punctuated by surprising innovation, reimagines the function of space and revolutionizes lifestyle onboard, while exclusively curated ambiances express the creative touch and aesthetic of authentic Made in Italy.

Savor the magnificence of futuristic ingenuity.

26M

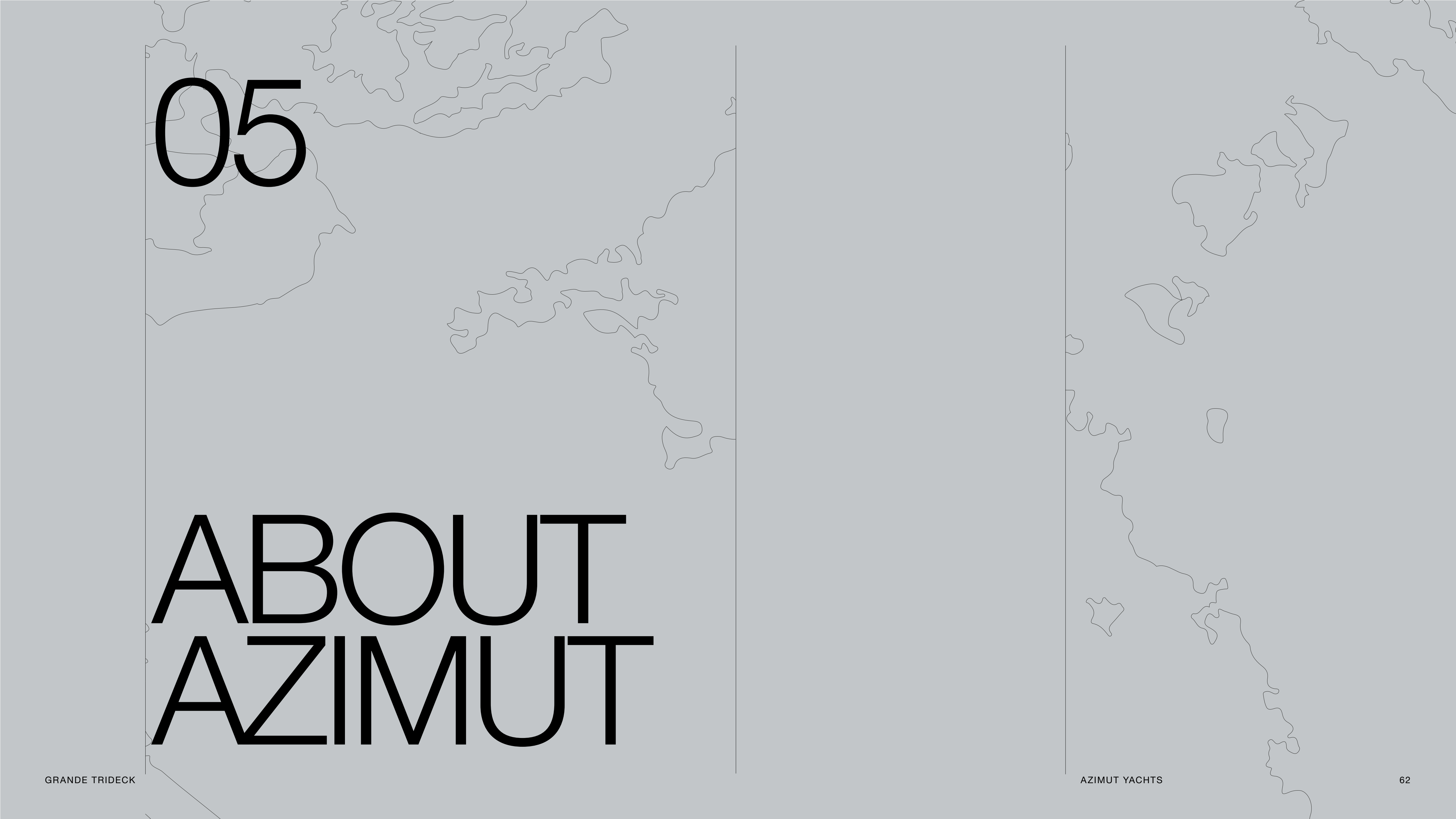
27M

32M

36M

TRIDECK





05

ABOUT AZIMUT



A FAMILY-MADE COMPANY CULTURE

An immense and personal passion for the sea. A clear and forward-facing attitude. A strong and relentless work ethic. Since 1969, Paolo Vitelli, the creative visionary founder and businessman behind Azimut, has been set on challenging the industry's status quo with a daring desire: bring to life an unexpected nautical experience, through yachts built to combine alluring aesthetics with construction expertise and impeccable technology.

An audacious mindset that has, over time, surprised and captivated the yachting sector, transforming Azimut into a bold and recognizable benchmark, and laying the foundation for the birth of the largest megayacht builder in the world, the Azimut | Benetti Group.

The international and management-based standing of the company today, is deeply nourished by the solid and memorable family heritage that has distinguished it from the beginning. A historically pioneering vision that enables it to continue thriving day after day, through ingenious inventions and long-term goals that look to the future with Paolo's daughter, Giovanna Vitelli.

A SUSTAINABLE VISION TODAY, FOR TOMORROW

An avant-garde vision and a strong emotional appeal have shaped the history of Azimut as a leader in the field of nautical innovation as well as its commitment to the creation of a sustainable-oriented and attentive company culture today.

An ambitious and personal touch that has allowed Azimut to grow and evolve on both levels, embracing the challenge of a future nurtured by an eco-conscious approach to boat construction and by an authentic focus and responsibility on human well-being.





GRANDE TRIDECK

OUR ♻️ ECO-YACHTING PHILOSOPHY

The Azimut I Benetti Group has made tangible investments to guide the Technical as well as the R&D departments toward the construction of yachts with a diminished environmental impact. Its main areas of intervention have focused on significantly lowering fuel consumption and CO2 emissions through the development of highly efficient hull designs, innovative propulsion systems and an extensive use of carbon fiber to decrease yacht weight.



A SAFE AND HEALTHY WORK ENVIRONMENT

The forerunning shipyard of Avigliana was the first of the company's Italian shipyards to obtain the ISO 45001 certification in 2011, attesting its rigorous abidance to all occupational health and safety requirements. Recognized as the most technologically-advanced shipyard in Europe, it has also led the nautical sector revolution in terms of being among the earliest adopters of the vacuum infusion process to drive resin into a laminate, avoiding styrene emissions and therefore guaranteeing its precious workers a healthier setting.

As of 2013, all the other Italian production sites have adapted to meet the necessary requirements to obtain the ISO 45001 certification.



GRANDE TRIDECK



AZIMUT YACHTS

A GLOBALLY-CONNECTED DEALER AND SERVICE NETWORK

5 SHIPYARDS

6 DIRECT OFFICES

138 OFFICIAL DEALERS

80 COUNTRIES

The highly widespread commercial network put in place by Azimut Yachts, allows the company to offer a continuous presence to its ship owners, concretely curating their demands by meeting their most specific needs.

[Find your Dealer →](#)



THE LARGEST PRIVATE GROUP IN THE YACHTING WORLD

Azimut is part of the Azimut | Benetti Group, the biggest private player and shipbuilder in the nautical sector today. The Vitelli family, the founder and majority shareholder of the company, has been leading the way for over fifty years now, continuing to innovate through the Group's main yacht brands, Azimut and Benetti, while developing a variety of service brands to cater to the different demands of ship owners worldwide.



OUR SHIPYARDS MAKE US PROUD

Avigliana — Italy

HQ / SHIPYARD

Savona — Italy

DELIVERY CENTRE

Viareggio — Italy

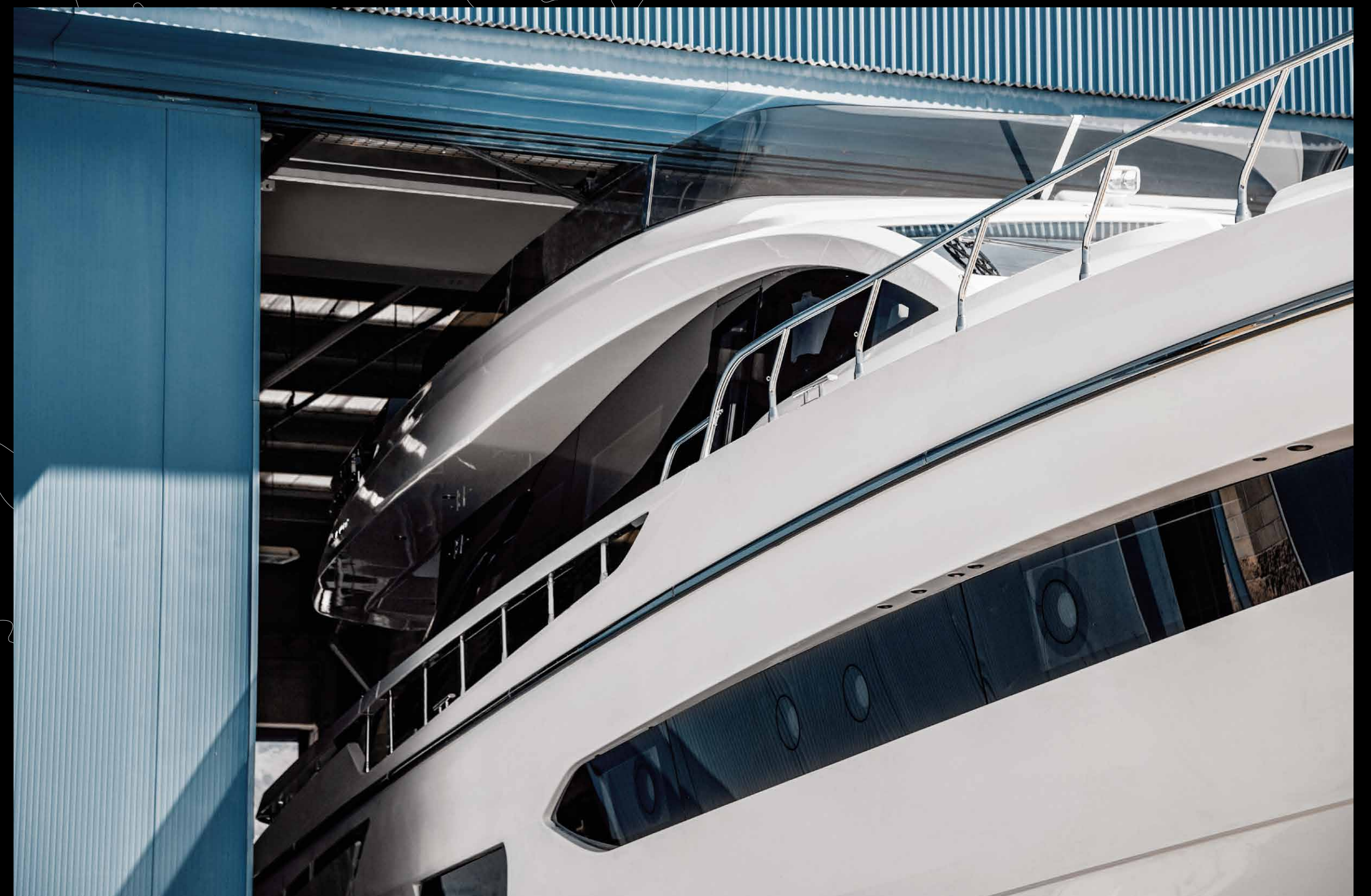
SHIPYARD / STYLING LOUNGE

Fano — Italy

SHIPYARD

Itajaí — Brazil

SHIPYARD





CONCEPT & DESIGN: APART
PHOTOS: ALESSANDRO GUERRIERI, GIOVANNI MALGARINI,
MICHELA LOCCI

AZIMUT YACHTS THANKS:
APR LUXURY LINEN, DE COTIIS ARCHITECTS, LORO PIANA,
DEDAR, PINETTI, PAOLA LENTI, SALVATORI, LA TAVOLA, KARTELL

OFFICIAL PARTNERS



GARMIN.

NAVICO
GROUP

Raymarine

SEAKEEPER

VOLVO
PENTA

AZIMUT | BENETTI SPA
VIA MARTIN LUTHER KING, 9
10051 AVIGLIANA, TORINO
ITALY

RELEASE 01.24

This brochure in no way constitutes a contract of sale for the boatyard's vessels to any person or company. All information contained herein, including but not limited to technical and performance data, illustrations, and drawings, is non-binding and for purposes of illustration only. The information in this brochure refers to the boatyard's standard motoryacht models available as of the date of publication. Technical and descriptive information is valid only to the extent that it pertains to the specific vessel that is the subject of a purchase. Contract terms are valid only to the extent that they are contained in a contract of sale. This document is based on information available at the time of publication. Despite efforts to ensure the greatest possible accuracy, the information contained herein may fail to cover all details, omit technical or commercial changes that may have been made subsequent to publication, describe features that are not present, and fail to envisage all circumstances that might occur. Any illustrations, photographs, diagrams and examples shown in this brochure are included solely for the purposes of illustrating the text. Due to the different features of each vessel, the boatyard assumes no liability for actual use based on the illustrated applications.

AZIMUT

azimutyachts.com

