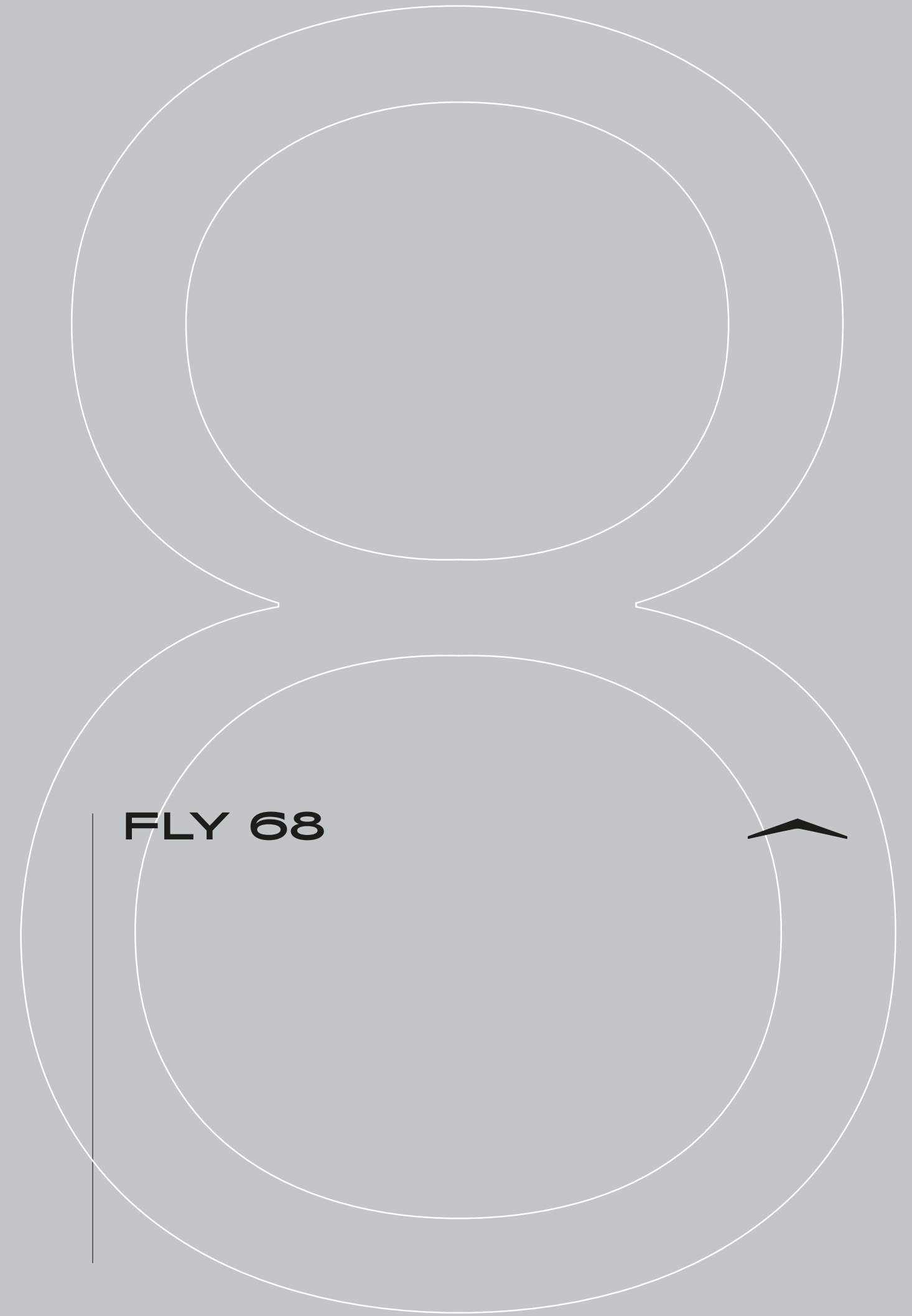


**^ZIMUT**



# INDEX

01	THE DESIGN & LIFESTYLE ON BOARD	P04
02	HER MAIN TECHNICAL FEATURES	P43
03	FLY 68 SPEC SHEET	P52
04	THE FLY SERIES	P57
05	ABOUT AZIMUT	P59



A one-of-a-kind beauty, enrapturing, that steals your breath away, leaving you speechless. An extraordinary idea as the only possible pathway, to get to where you want, to explore, to go beyond.

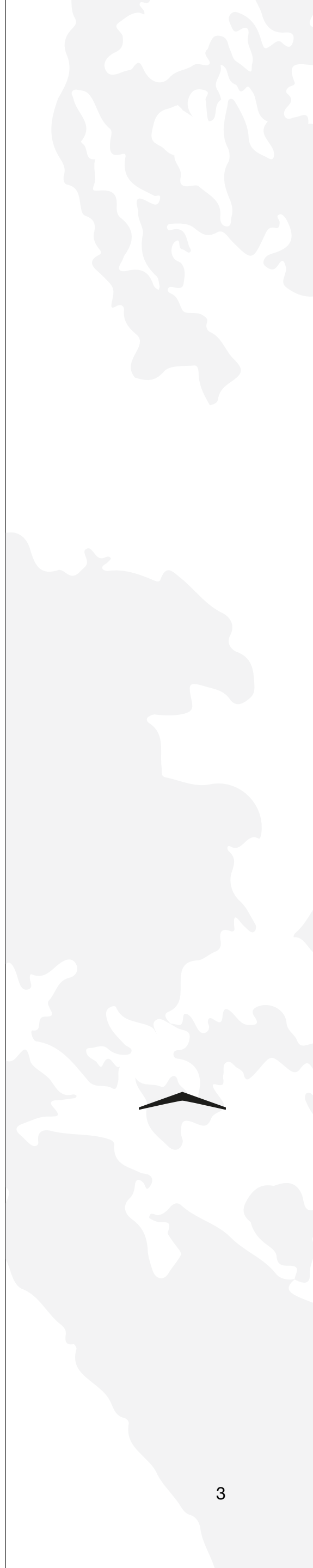
The freedom of embracing the unknown, that you know you'll love as a part of your very own story. A thought that provokes your mind and then inspires you to aim for the impossible, making mistakes, yet being brave.


A magic je ne sais quoi that enchants and intrigues you, moving you to feel more and to sense uniqueness.

The choice to risk it all, the one that makes you go for it, to impress yourself and all those who are worth it.

Welcome to Azimut.

AZIMUT.  
DARE TO AMAZE.





01

# THE DESIGN & LIFESTYLE ON BOARD

# FLY 68, AN ODE TO LIFESTYLE UNIQUENESS.

A refined lifestyle-tailored statement, the ingenious Fly 68 is all about transforming onboard living spaces into a uniquely personal affair.

The three main deck compositions available are conceived to express diverse and particular living preferences through clever design choices, from the proud presence of an upfront galley, suggesting an openly informal attitude, to the privacy-seeking intention of a more secluded kitchen and crew area.

It's time to embrace the true pleasure of possibility with Fly 68.





Welcome on board, ladies and gentlemen.

Let us begin the tour.





SHE IS BOLD  
AND HARMONIOUS



[ The fiberglass bulwarks are contoured into an element of design, fluidly forming a handrail amidships before it blends back into the hull. ]

The lines of the Fly 68 are sleek, subtle and sculptural. Her silhouette is shaped via advanced modeling techniques that research and emphasize the elemental continuity of the surfaces, breathing fluid boldness and extreme cleanness into the overall design. This evolved sense of aesthetics is explored and developed by the exterior designer Alberto Mancini, whose inspiration from the realm of car design has contributed to the creation of a new stylistic language for yachts, giving birth to an innovative ideal that enriches and empowers Azimut's design DNA in a dynamically distinctive way.

# A SURPRISING BREAK AT THE BOW

Transformability and multifunctionality for absolute conviviality, that's the Fly 68 formula. Adding extra space to lounge in the sun is certainly enticing, and easily achieved by flipping the counter-facing sofas down to expand the superlative set of sunpads.







[ The carbon fiber supports enable a bimini top to be easily set up over the bow lounge ]

# A SENSE OF FLOATING SOPHISTICATION



A curated cockpit hints at the sophisti-chic, curvaceous and clean style of the interiors, underpinned by the aesthetic floating sensation felt from the dining sofa's residential touch to the organic feel of the bar cabinet with its incorporated teak tray.



[ The sofa's fabric is aesthetically pleasing, easy to clean and 100% water resistant. ]



# OPEN-SPACE LIVING, ON TOP OF THE WORLD



The flybridge level is a unique open-air zone, presenting three separate but seamless habitats to be enjoyed with heightened privacy. Sunbathing in proximity of the wheelhouse forward, lunching or barbecuing with the informal luxe of an American bar, and socializing aft on sunpads or sofas, are all the experiences that the flybridge of the Fly 68 offers at a whole new level.



[ The sunbed astride the helm station catches pure rays through the opening section in the hard top, shielded from glare off the waves and excessive wind by the tinted windscreen ]



[ The full-size alfresco table hosts up to eight guests, sided by a practical, fully-equipped bar ]



# THE UPPER TOUCH OF THE INTERIORS



The interior ambiances, from the architecture to every minute detail, are conceived by the designer Achille Salvagni. The elegant stylistic impression conveyed by the smooth lines of fluid furniture in light brushed oak blends with natural textiles in neutral nuances and occasional mahogany accents, fully unfolding the harmonious essence of the Fly 68.

[ Matte-finished Thai wood hosts inserts of natural teak and pale matte-painted surfaces ]





[ Details in glossy mahogany wood add a touch of sophistication and warmth ]



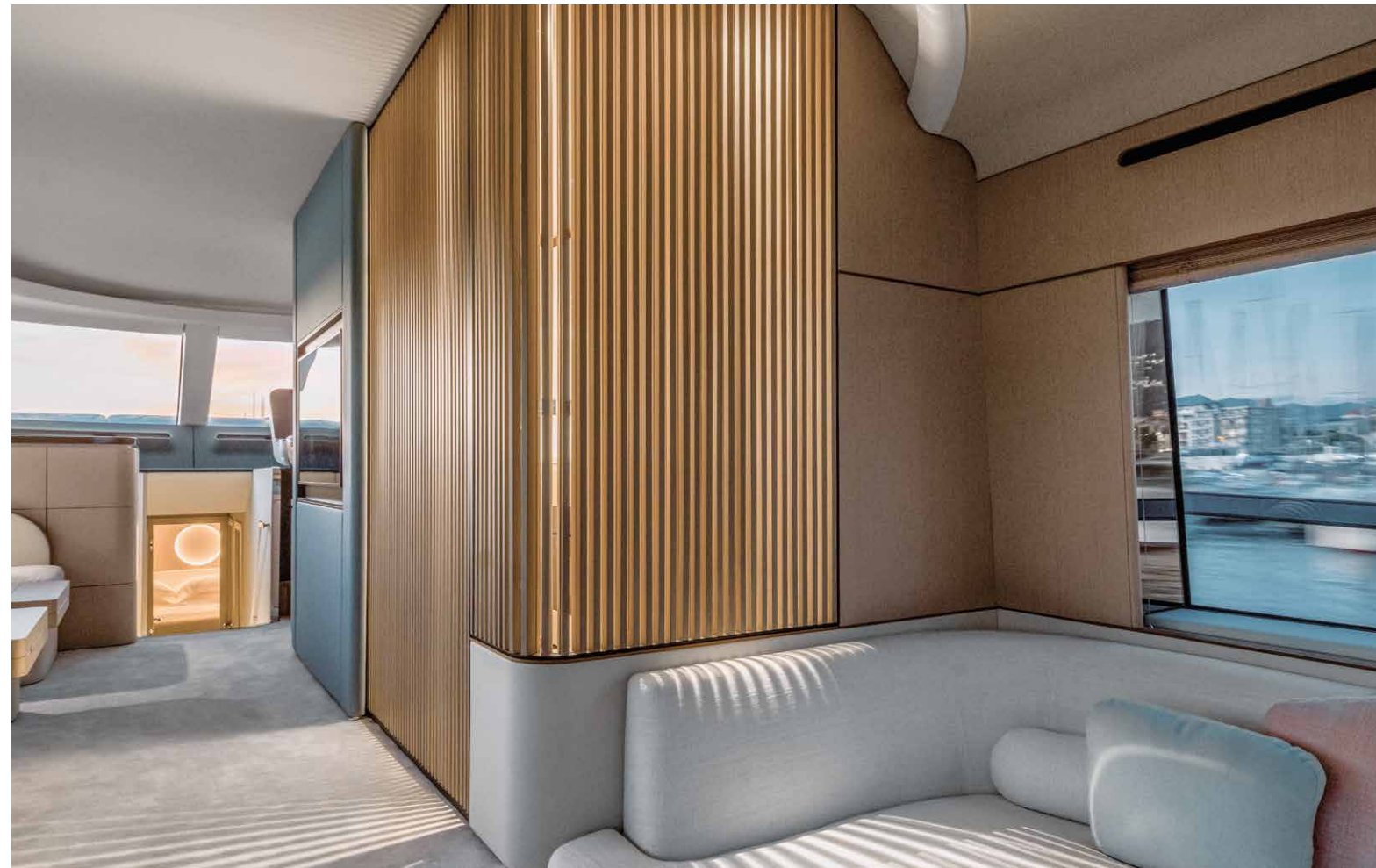
# LIFESTYLE-TAILORED LAYOUTS

The contemporary appeal of the Fly 68 is expressed through the possibility to choose among three main deck configurations, each imagined to suit unique onboard living styles and desires. From a more easy-going galley placed at the entrance to the more sensual solution of the semi-hidden “Lanterna” layout, the rest of the space is designed to adapt, ensuring that the midship main deck always hosts a multi-purpose lounging experience





# THE THREE MAIN DECK IDEALS



[ Configuration N.1 - Enclosed Galley ]



[ Configuration N.2 - Open Galley ]



[ Configuration N.3 - Aft Galley ]

# ENCLOSED GALLEY LAYOUT

## CONFIGURATION N.1

Sheer elegance, natural light and pure privacy.

With the living area set at the entrance, this closed-off galley, discreetly posed to face the convertible dining area, is all about discovery. The plexiglass-joined wooden slats concealing it let light filter through the ambience, echoing the aesthetic and function of a lantern. Hence, this warm and sophisticated solution is named Lanterna.

The innovative design of Lanterna increases privacy, light and the perception of space





# A MULTI-PURPOSE AREA FOR SIMPLE PLEASURES

A multi-purpose accent gives the second lounging zone a fabulously functional appeal, fluidly adapting to the everyday life and needs of everyone on board. The full-height panel with inset tv is as inviting as the coffee tables facing it, which can be transformed to host up to eight guests for cozy dinners.



[ The multi-purpose area is featured on the Fly 68 versions with enclosed and open galley layouts. The twin coffee tables can be raised and extended to become a unique table for eight ]



# OPEN GALLEY LAYOUT

## CONFIGURATION N.2

Modern feel, clean-cut look and convivial mood. Following the interior layout proposed for the Lanterna option, this version of the galley is more relaxed, its doorless physique allowing the sense of conviviality to connect every corner of the main deck as it opens directly onto the convertible dining room.





# AFT GALLEY LAYOUT

## CONFIGURATION N.3

Contemporary cut, open-space style and informal touch. Suggesting a smooth connection between interior and exterior ambiances, this casual galley is placed at the entrance with a half-height window that expands the opening. In honest communication with the dedicated dining across, it serves seamlessly, leaving the forward living area enveloped in the soft charm of tranquil serenity.





[ The galley by the entrance is perfect for serving both exterior and interior dining areas. ]



[ This option allows for a full-width forward area, free for lounging ]

Now, let us discover the guest accommodations.

Shall we?





# AN ENHANCED SENSE OF SUITE-NESS

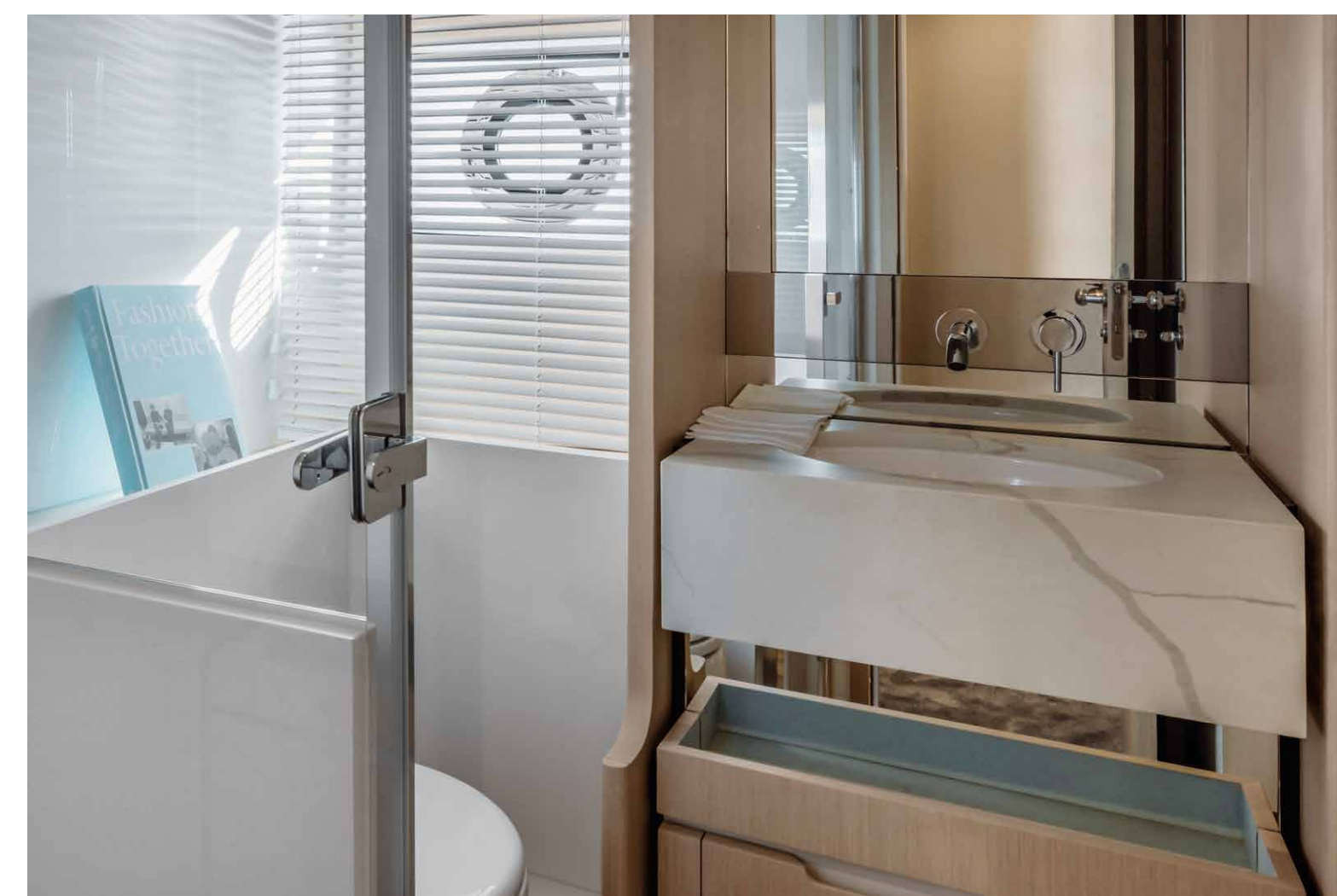
An authentic and refined feeling of well-being pervades the suite. The soft and edgeless design is elevated by a palette of muted colors and the carpeting's plush presence. The ensuite bathroom is conceived to openly dialogue with the ambience, expressing a uniquely spa-inspired atmosphere only conceptually separated by the stone-effect flooring that leads the way to its entrance.






[ The sliding door of the ensuite bathroom can be fully rolled back for a stylish spa effect ]









02

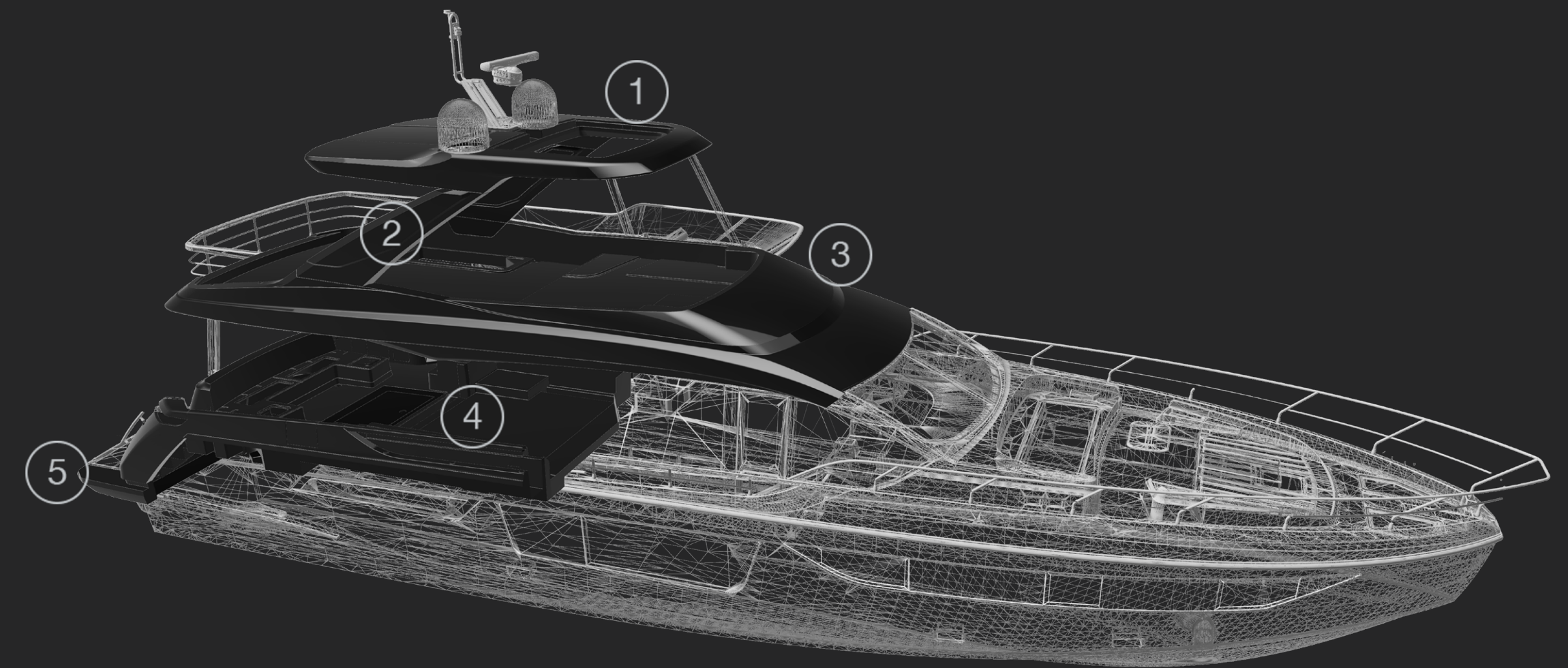
# HER MAIN TECHNICAL FEATURES

The beauty of the Fly 68 is not solely a matter of exterior and interior design elements that combine to perfectly play out Azimut's essence. Her beauty is also about discovering the technological advancements and special components that contribute to making her truly unique and highly innovative.



# CARBON-TECH GENERATION

Azimut's pioneering use of carbon fiber lamination goes beyond pure performance. The Carbon Tech Generation offers expanded volumes on board, while maintaining excellent dynamic stability and perfect handling. Preserving the yacht's low center of gravity, the carbon fiber was focused on the upper parts of the yacht, lightening the laminated components by up to 30% and reducing the natural roll momentum up to 15%.



- ① HARD TOP
- ② ROLLBAR
- ③ FLYBRIDGE

- ④ AFT PART OF THE DECK
- ⑤ PLATFORM

# ACTIVE TRIM CONTROL

Automated interceptors optimize the trim at every speed to maintain ideal hydrodynamics for performance and efficiency, at the same time negating any lateral imbalance due to sidewinds or weight distribution. With the pilot's peace of mind assured, the driving experience is simpler and more enjoyable.



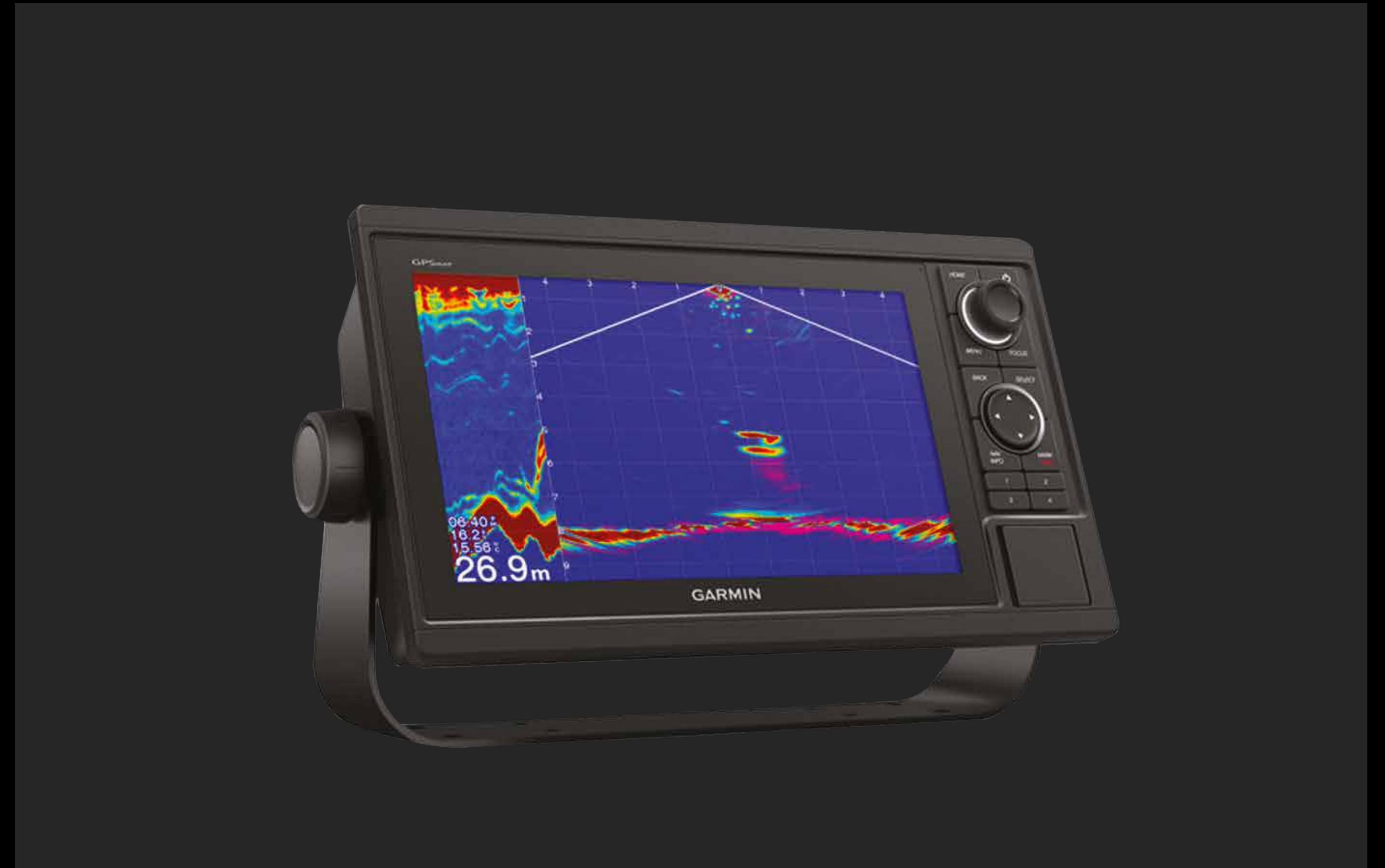
# JOYSTICK DRIVING

The Joystick acts as an analog for the yacht, offering intuitive, one-handed control in every situation. When the yacht is stopped, moving the Joystick forward or back, side to side, and twisting clockwise or counter-clockwise activates the engines to mimic that motion. It's the easiest way to pull off precise maneuvers. When Joystick Driving is activated, the autopilot is immediately engaged. For easy course correction, the driver may briefly twist the Joystick for 1 degree in that direction or twist and hold for 10 degrees. The Autopilot keeps a forward course after the Joystick is released.



# INTEGRATED CONTROL AND MONITORING SYSTEM

The custom-installed Garmin electronics have been integrated to control and monitor every onboard system: from engines and alarms, to bilge and water discharge pumps, tank levels and engine room ventilation, right through to the sound system and the air conditioning units. The system can be accessed on board from both the interior and exterior helm stations and, with the mobile app, remotely from a tablet or smartphone.



# EFFICIENT AIR TREATMENT


Aircare Energy Saving completely refreshes the onboard atmosphere every two hours with filtered outside air, especially appreciated below deck. The decentralized system uses a dual-flow heat exchanger, so it can optimize both the temperature and the humidity of the incoming fresh air in each zone without increasing the parallel HVAC's energy consumption. Meanwhile, the triple multilayered filter eliminates 98% of fine particles that pollute the air, such as pollen, dust mites, spores and even some bacteria.



# HTS HIGH TECHNICAL STANDARD DECLARATION

This yacht's design and engineering meet the highest standards for production recreational vessels. Azimut Yachts issues a declaration of the premium materials, advanced technology and rigorous testing procedures.





03

# FLY 68 SPEC SHEET

# GENERAL CHARACTERISTICS

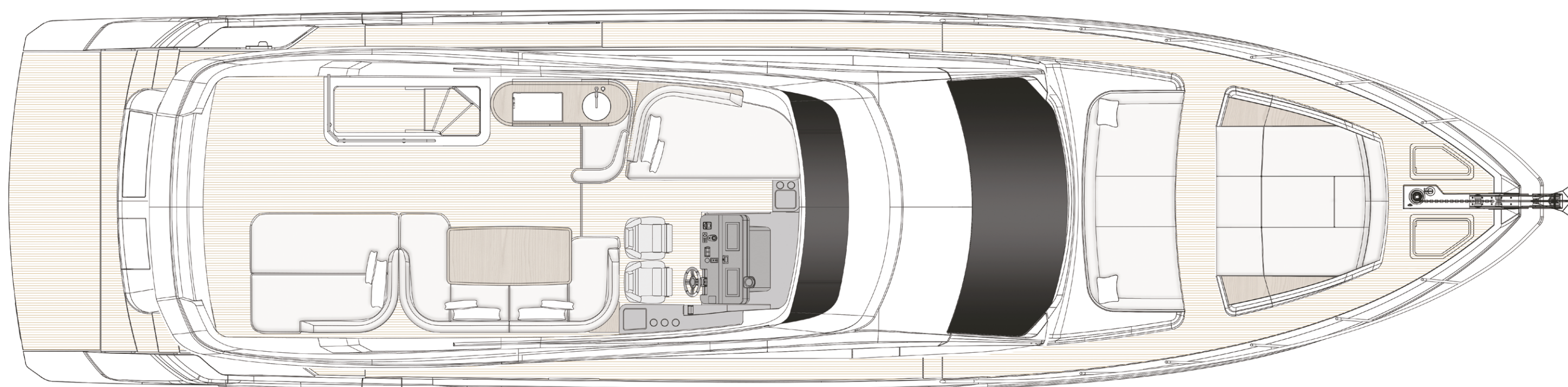
LENGTH OVERALL	20,98 m	68' 10"
BEAM MAX	5,23 m	17' 2"
DRAFT	1,60 m	5' 3"
DISPLACEMENT	43,7 t	96342 lb
ENGINES	2 x VOLVO IPS 1350 (1000 hp)	
MAXIMUM SPEED	up to 32 knots	
CRUISING SPEED	28 knots	
FUEL CAPACITY	3700 l	977.4 US Gal
WATER CAPACITY	1000 l	264.2 US Gal
CABINS	4 + 1 crew	
BERTHS	8 + 2 crew	
HEAD COMPARTMENTS	3 + 1 crew	
BUILDING MATERIALS	carbon fibre + GRP	
KEEL	Planing hull	
EXTERIOR DESIGNER	Alberto Mancini	
INTERIOR DESIGNER	Achille Salvagni Architetti	
HULL DESIGNER	P.L. AUSONIO Naval Architecture & Azimut R&D Dept.	
BUILDER	Azimut Yachts	
CERTIFICATIONS	CE A; NMMA	

Last updated 11.2025  
Please consult your dealer for the latest specifications.

UNI ISO 8666  
The performance described applies to a vessel with standard configuration (standard equipment installed) and a clean hull, propellers, and rudder. It is also noted that the performance described was recorded under favourable sea and wind conditions (Beaufort scale index 1, Douglas scale index 1); different and worse sea conditions could significantly impact performance.

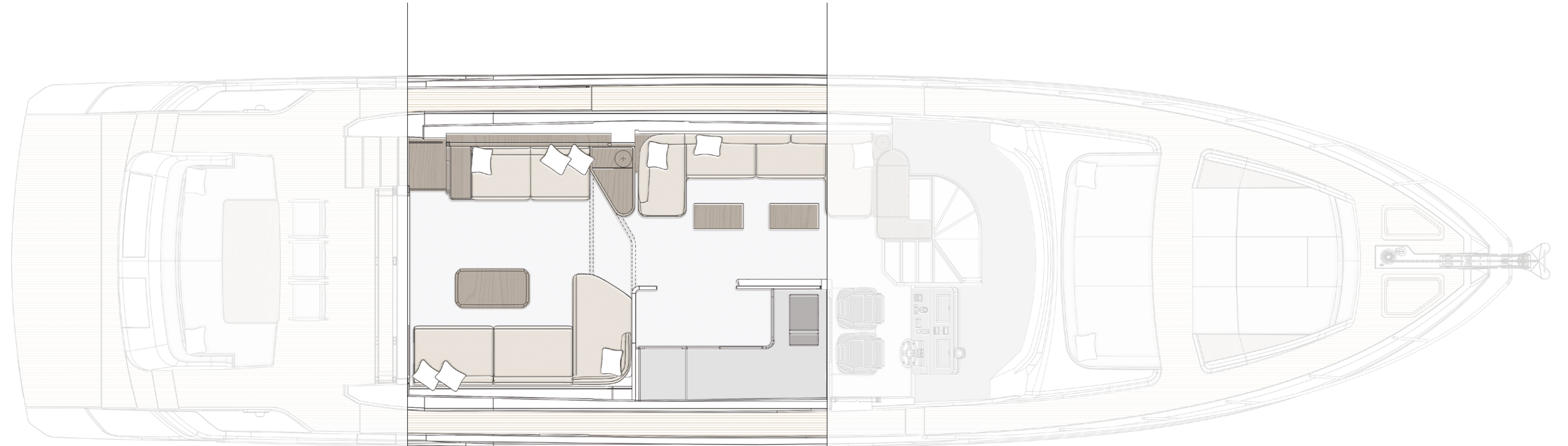
CE MARK  
Given the continual evolution of technology, Azimut | Benetti S.p.A reserves the right to modify the technical specifications on its vessels at any time and without prior notice.

# FLYBRIDGE

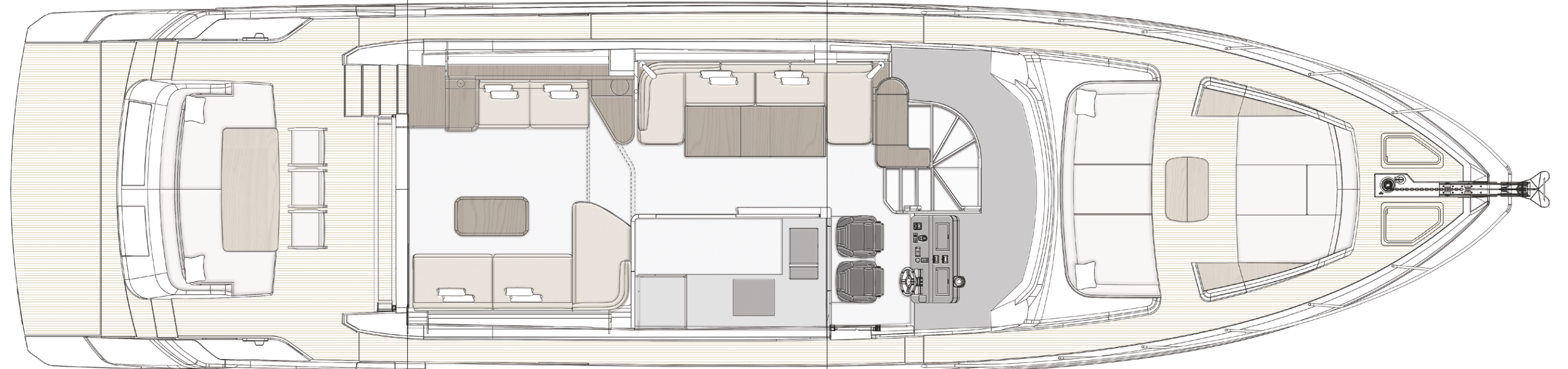


# MAIN DECK

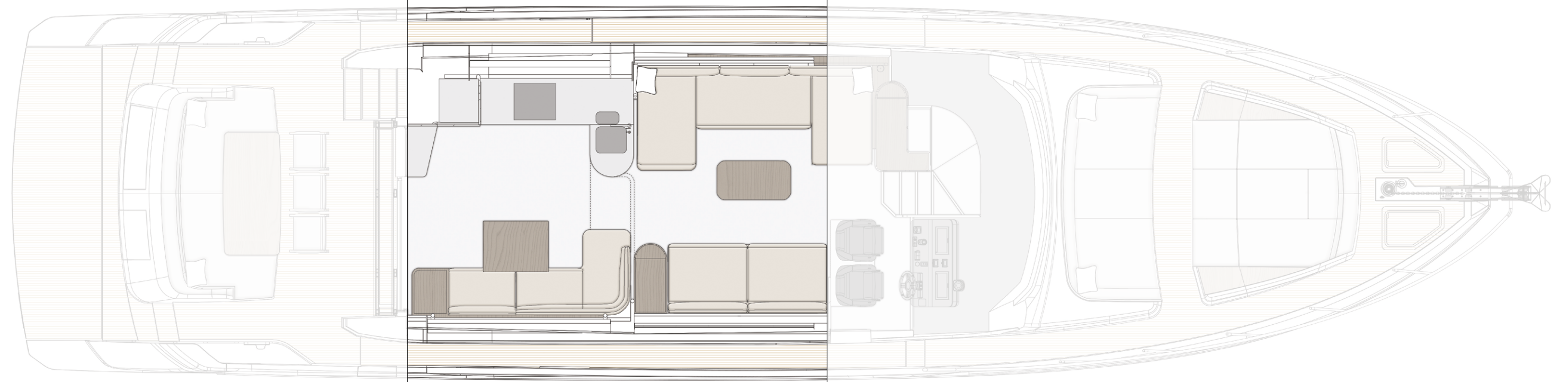
OPEN GALLEY



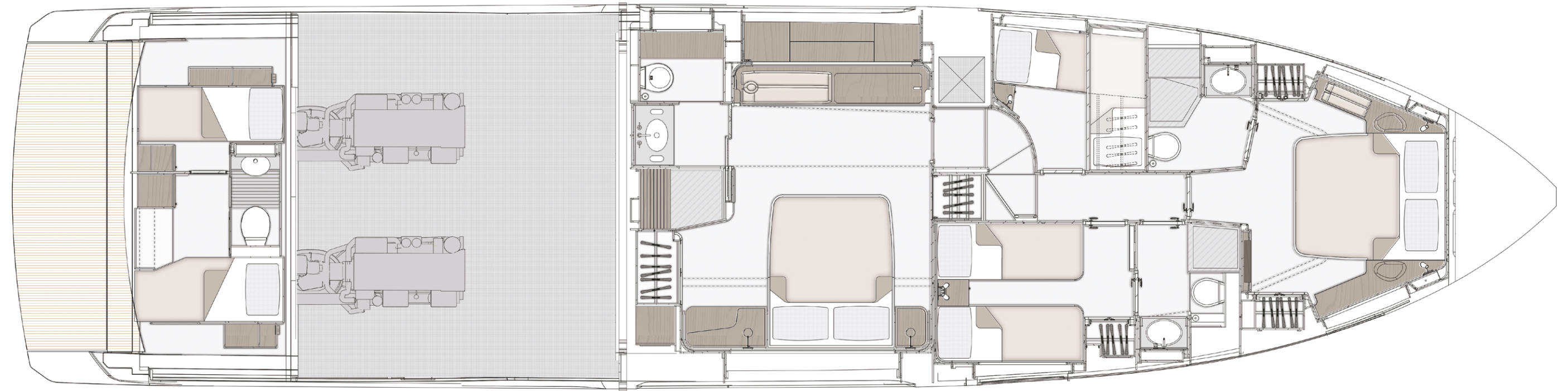
ENCLOSED GALLEY



AFT GALLEY



# LOWER DECK





04

# THE FLY SERIES

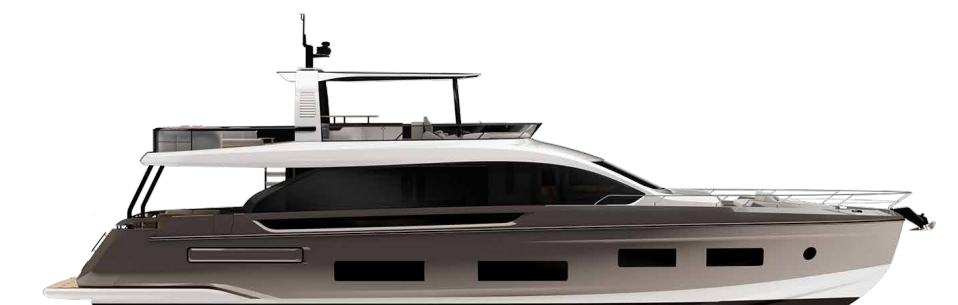
# A VISUALLY IMMERSIVE EXPERIENCE

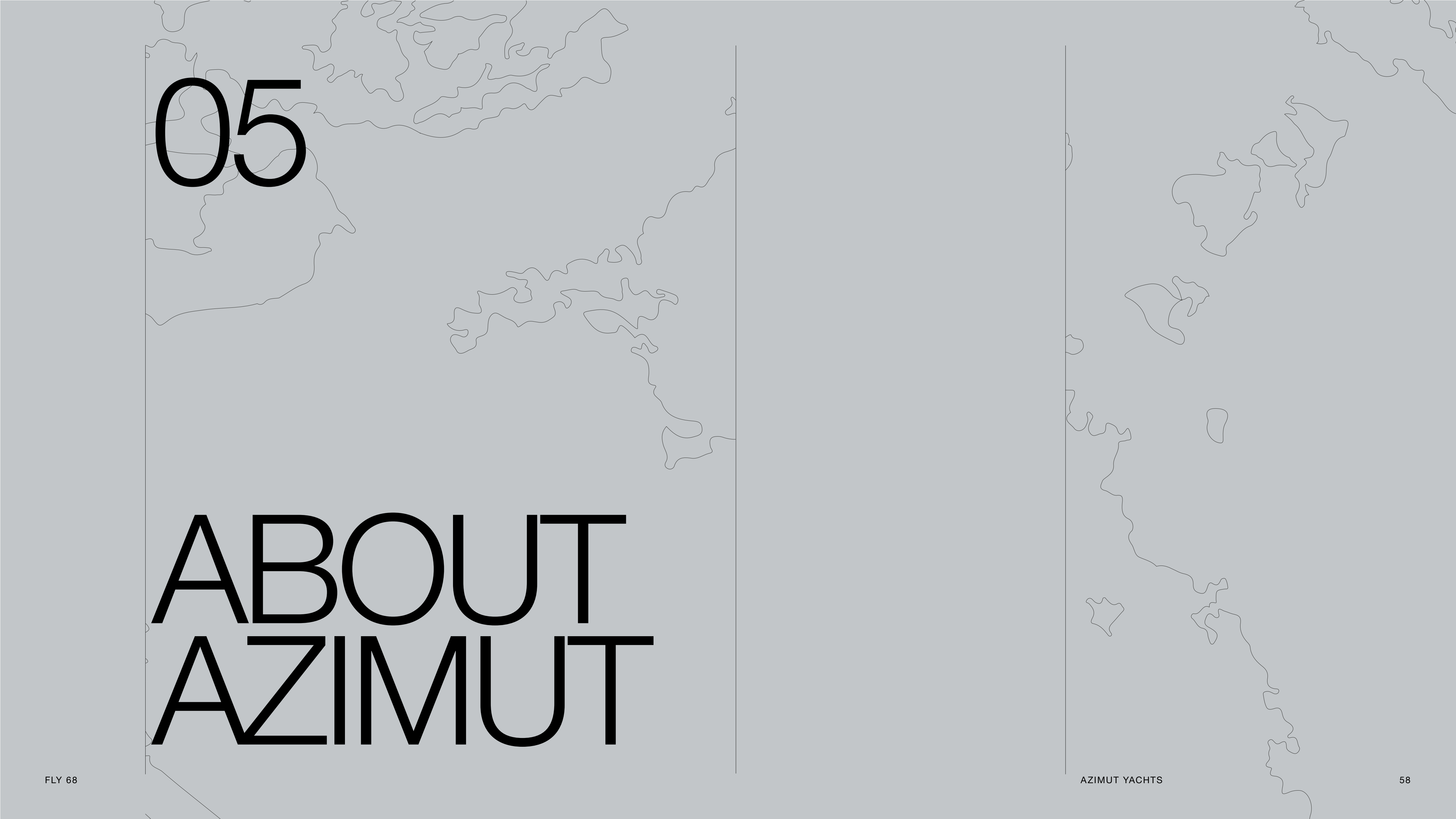
A barrierless and illuminated experience, the iconic Flybridge boat series was forged out of tradition to immerse its guests in the sea, while inspiring the unique feeling of open-air freedom.

Sleek and spacious all-Italian interiors are bound to create a sensational atmosphere, filling days and nights with charming comfort and lightness.

Experience yesterday's game-changer spirit upped by today's avant-garde air.

53  
62  
68  
72  
78  
82





05

# ABOUT AZIMUT



# A FAMILY-MADE COMPANY CULTURE

An immense and personal passion for the sea. A clear and forward-facing attitude. A strong and relentless work ethic. Since 1969, Paolo Vitelli, the creative visionary founder and businessman behind Azimut, has been set on challenging the industry's status quo with a daring desire: bring to life an unexpected nautical experience, through yachts built to combine alluring aesthetics with construction expertise and impeccable technology.

An audacious mindset that has, over time, surprised and captivated the yachting sector, transforming Azimut into a bold and recognizable benchmark, and laying the foundation for the birth of the largest megayacht builder in the world, the Azimut | Benetti Group.

The international and management-based standing of the company today, is deeply nourished by the solid and memorable family heritage that has distinguished it from the beginning. A historically pioneering vision that enables it to continue thriving day after day, through ingenious inventions and long-term goals that look to the future with Paolo's daughter, Giovanna Vitelli.

# A SUSTAINABLE VISION TODAY, FOR TOMORROW

An avant-garde vision and a strong emotional appeal have shaped the history of Azimut as a leader in the field of nautical innovation as well as its commitment to the creation of a sustainable-oriented and attentive company culture today.

An ambitious and personal touch that has allowed Azimut to grow and evolve on both levels, embracing the challenge of a future nurtured by an eco-conscious approach to boat construction and by an authentic focus and responsibility on human well-being.





# OUR ♻️ ECO-YACHTING PHILOSOPHY

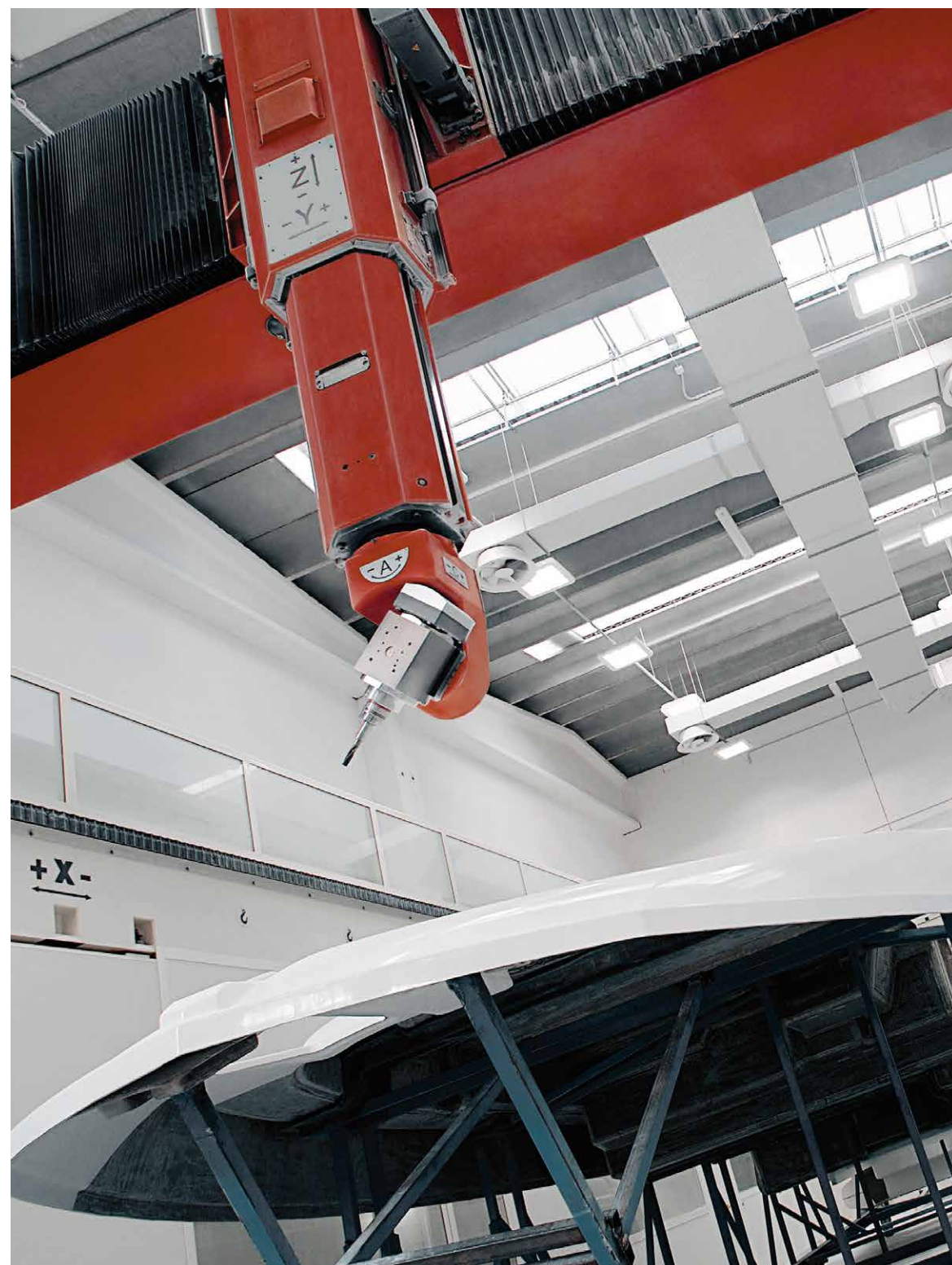
The Azimut I Benetti Group has made tangible investments to guide the Technical as well as the R&D departments toward the construction of yachts with a diminished environmental impact. Its main areas of intervention have focused on significantly lowering fuel consumption and CO2 emissions through the development of highly efficient hull designs, innovative propulsion systems and an extensive use of carbon fiber to decrease yacht weight.



# A SAFE AND HEALTHY WORK ENVIRONMENT

The forerunning shipyard of Avigliana was the first of the company's Italian shipyards to obtain the ISO 45001 certification in 2011, attesting its rigorous abidance to all occupational health and safety requirements. Recognized as the most technologically-advanced shipyard in Europe, it has also led the nautical sector revolution in terms of being among the earliest adopters of the vacuum infusion process to drive resin into a laminate, avoiding styrene emissions and therefore guaranteeing its precious workers a healthier setting.

As of 2013, all the other Italian production sites have adapted to meet the necessary requirements to obtain the ISO 45001 certification.



# A GLOBALLY-CONNECTED DEALER AND SERVICE NETWORK

---

5 SHIPYARDS

---

6 DIRECT OFFICES

---

138 OFFICIAL DEALERS

---

80 COUNTRIES

---

The highly widespread commercial network put in place by Azimut Yachts, allows the company to offer a continuous presence to its ship owners, concretely curating their demands by meeting their most specific needs.

[Find your Dealer →](#)



# THE LARGEST PRIVATE GROUP IN THE YACHTING WORLD

Azimut is part of the Azimut | Benetti Group, the biggest private player and shipbuilder in the nautical sector today. The Vitelli family, the founder and majority shareholder of the company, has been leading the way for over fifty years now, continuing to innovate through the Group's main yacht brands, Azimut and Benetti, while developing a variety of service brands to cater to the different demands of ship owners worldwide.



# OUR SHIPYARDS MAKE US PROUD

Avigliana — Italy

HQ / SHIPYARD

Savona — Italy

DELIVERY CENTRE

Viareggio — Italy

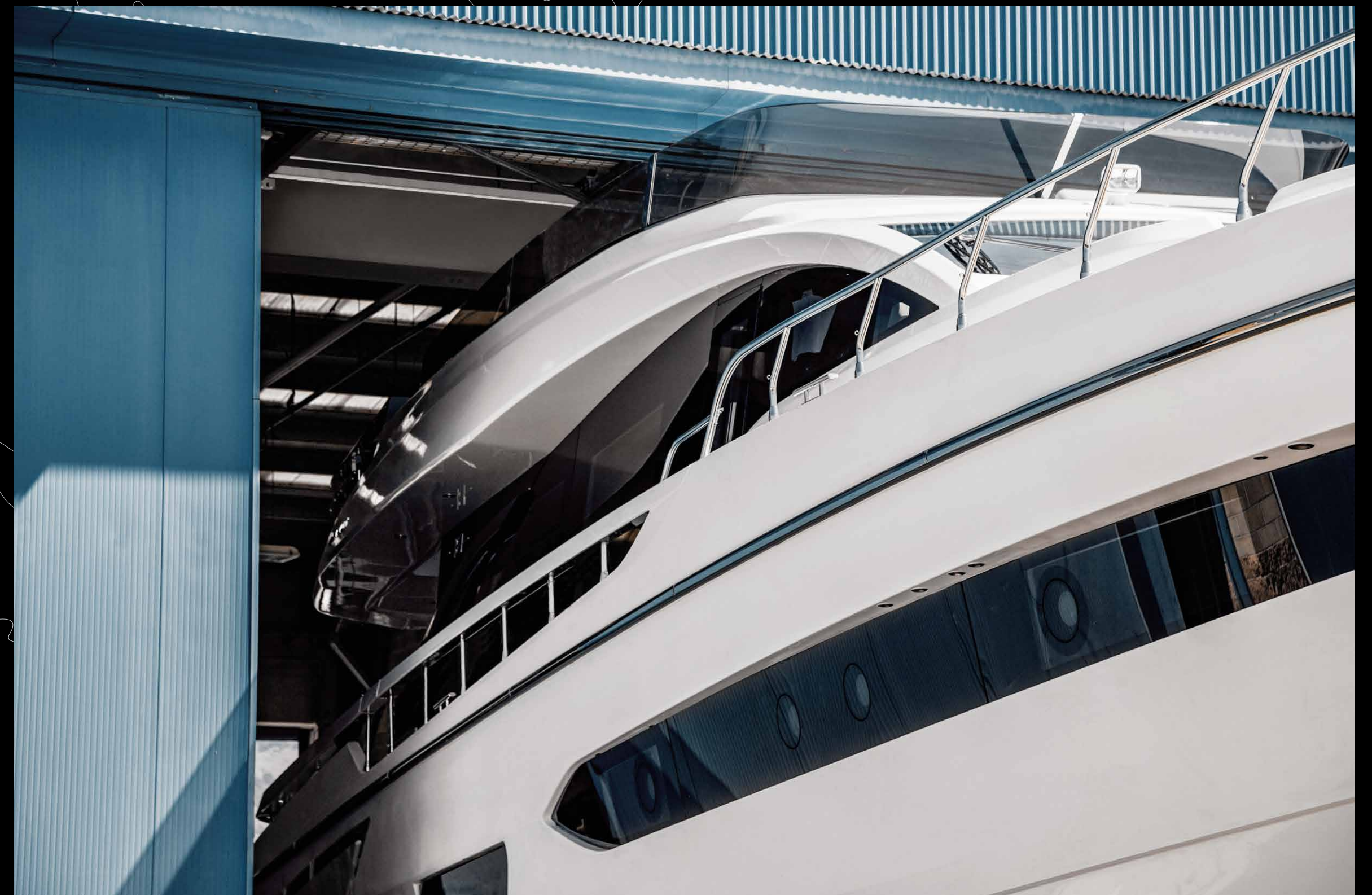
SHIPYARD / STYLING LOUNGE

Fano — Italy

SHIPYARD

Itajaí — Brazil

SHIPYARD





CONCEPT & DESIGN: APART  
PHOTOS: PAOLO PETRIGNANI, SARA MAGNI,  
GIOVANNI MALGARINI, ALESSANDRO GUERRIERI

AZIMUT YACHTS THANKS:  
ACHILLE SALVAGNI ARCHITETTI, ALDUE, FRETTE, SARTORIA  
MATTEI, CATTINA, CALIBAN

OFFICIAL PARTNERS



AZIMUT | BENETTI SPA  
VIA MARTIN LUTHER KING, 9  
10051 AVIGLIANA, TORINO  
ITALY

RELEASE 11.25

This brochure in no way constitutes a contract of sale for the boatyard's vessels to any person or company. All information contained herein, including but not limited to technical and performance data, illustrations, and drawings, is non-binding and for purposes of illustration only. The information in this brochure refers to the boatyard's standard motoryacht models available as of the date of publication. Technical and descriptive information is valid only to the extent that it pertains to the specific vessel that is the subject of a purchase. Contract terms are valid only to the extent that they are contained in a contract of sale. This document is based on information available at the time of publication. Despite efforts to ensure the greatest possible accuracy, the information contained herein may fail to cover all details, omit technical or commercial changes that may have been made subsequent to publication, describe features that are not present, and fail to envisage all circumstances that might occur. Any illustrations, photographs, diagrams and examples shown in this brochure are included solely for the purposes of illustrating the text. Due to the different features of each vessel, the boatyard assumes no liability for actual use based on the illustrated applications.

AZIMUT

[azimutyachts.com](http://azimutyachts.com)

