

36

AZIMUT

M

GRANDE 36M

CONCEPT & EXTERIOR DESIGN  
ALBERTO MANCINI

INTERIOR DESIGN BY M2ATELIER

PRELIMINARY BROCHURE

# INDEX

01	THE DESIGN & LIFESTYLE ON BOARD	P04
02	GRANDE 36M SPEC SHEET	P32



A one-of-a-kind beauty, enrapturing,  
that steals your breath away, leaving you  
speechless. An extraordinary idea as the only  
possible pathway, to get to where you want,  
to explore, to go beyond.

The freedom of embracing the unknown, that  
you know you'll love as a part of your very own  
story. A thought that provokes your mind and  
then inspires you to aim for the impossible,  
making mistakes, yet being brave.

A magic je ne sais quoi that enchants and  
intrigues you, moving you to feel more and to  
sense uniqueness.

The choice to risk it all, the one that makes you  
go for it, to impress yourself and all those who  
are worth it.

Welcome to Azimut.

AZIMUT.  
DARE TO AMAZE.



01

# THE DESIGN & LIFESTYLE ON BOARD

































Now, let us discover the guest accommodations. Shall we?





[ Burgundy ]

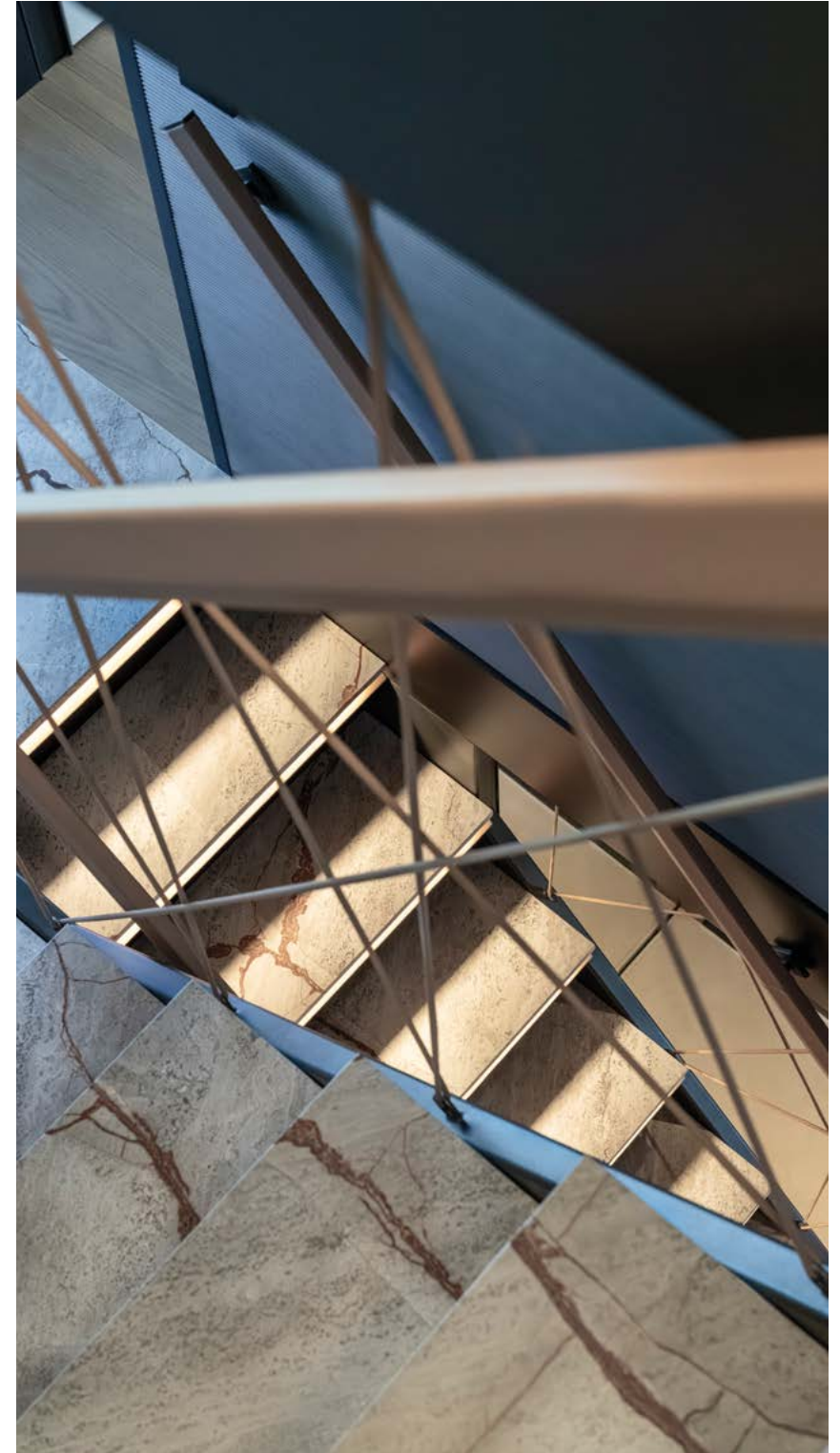








GRANDE 36M



AZIMUT YACHTS













02

# GRANDE 36M SPEC SHEET

# GENERAL CHARACTERISTICS

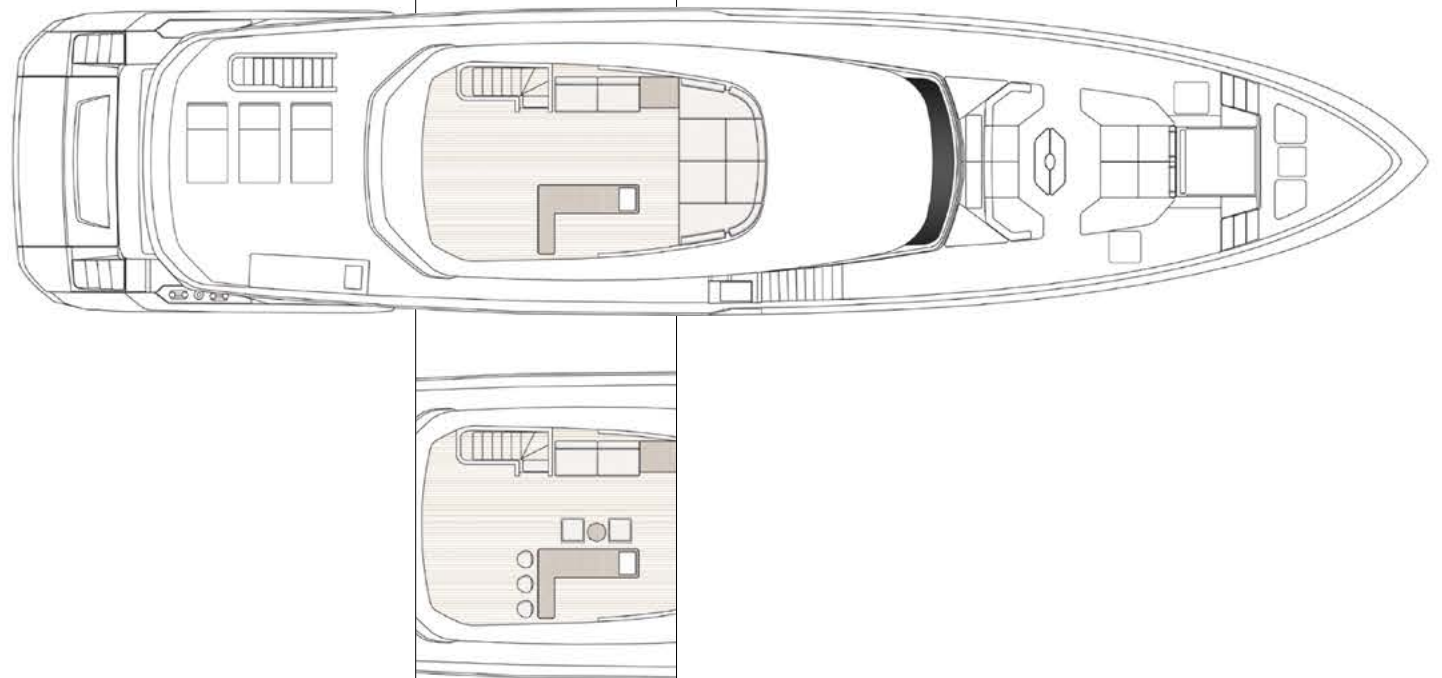
LENGTH OVERALL	<b>35,29 m</b>	<b>115' 9"</b>
BEAM MAX	<b>7,5 m</b>	<b>24' 7"</b>
DRAFT	<b>1,97 m</b>	<b>6' 6"</b>
DISPLACEMENT	<b>approx. 180 t</b>	<b>396828 lb</b>
ENGINES	<b>2 x MTU 2200 hp 2 x MTU 2400 hp</b>	
MAXIMUM SPEED	<b>up to 22/24 kn</b>	
CRUISING SPEED	<b>18/19 kn</b>	
FUEL CAPACITY	<b>19000 l</b>	<b>5020 US Gal</b>
WATER CAPACITY	<b>3700 l</b>	<b>977 US Gal</b>
CABINS	<b>5 + 4 crew</b>	
BERTHS	<b>10 + 6 crew</b>	
HEAD COMPARTMENTS	<b>6 + 4 crew</b>	
BUILDING MATERIAL	<b>Carbon fibre + GRP</b>	
EXTERIOR DESIGNER	<b>Alberto Mancini</b>	
INTERIOR DESIGNER	<b>M2 Atelier</b>	
HULL DESIGNER	<b>P.L. AUSONIO Naval Architecture &amp; Azimut Yachts R&amp;D Dept.</b>	
KEEL	<b>D2P Displacement to planing hull</b>	
BUILDER	<b>Azimut Yachts</b>	
CLASSIFICATION	<b>Structural project compliant with Rina Class Pleasure Certificate (certificate upon request as optional)</b>	

Last updated 11.2023  
Please consult your dealer for the latest specifications.

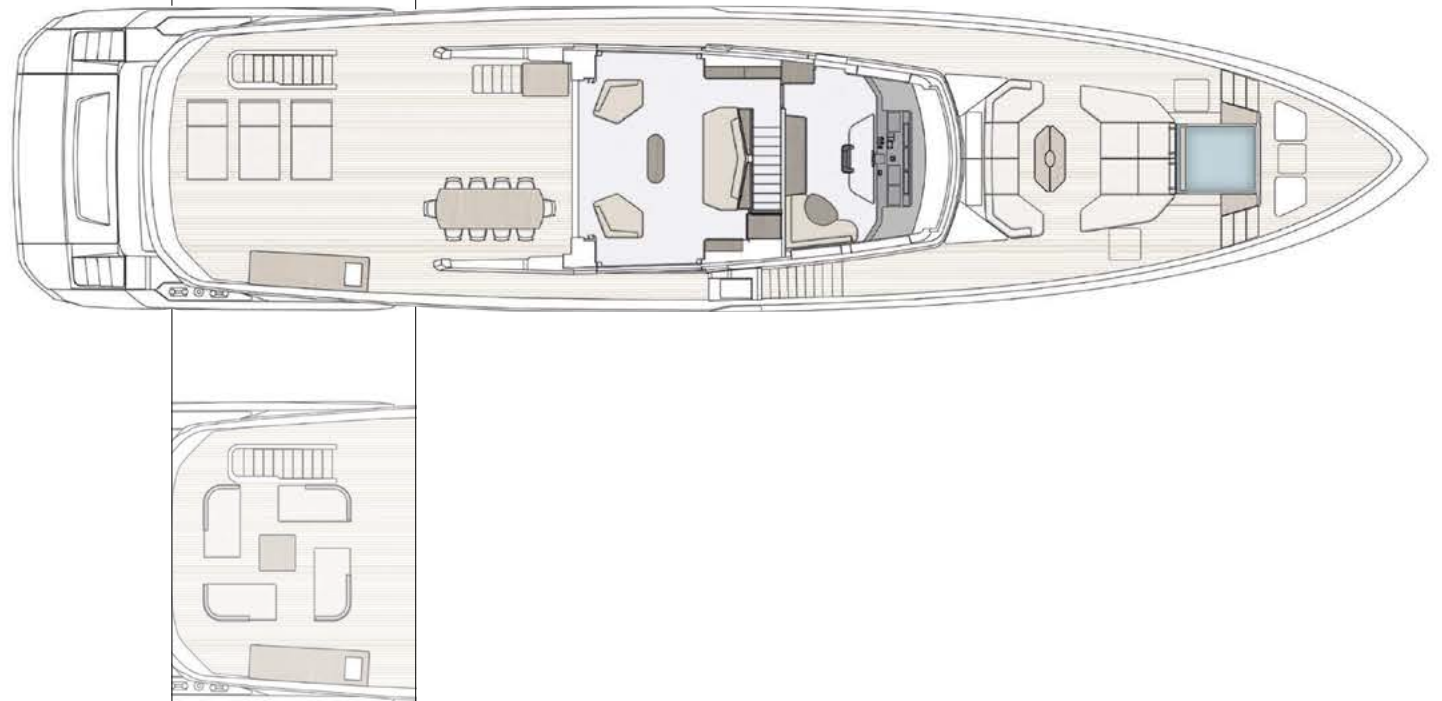
UNI ISO 8666  
The performance described applies to a vessel with standard configuration (standard equipment installed) and a clean hull, propellers, and rudder. It is also noted that the performance described was recorded under favourable sea and wind conditions (Beaufort scale index 1, Douglas scale index 1); different and worse sea conditions could significantly impact performance.

CE MARK  
Given the continual evolution of technology, Azimut | Benetti S.p.A reserves the right to modify the technical specifications on its vessels at any time and without prior notice.

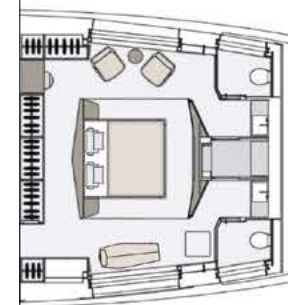
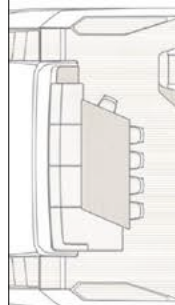
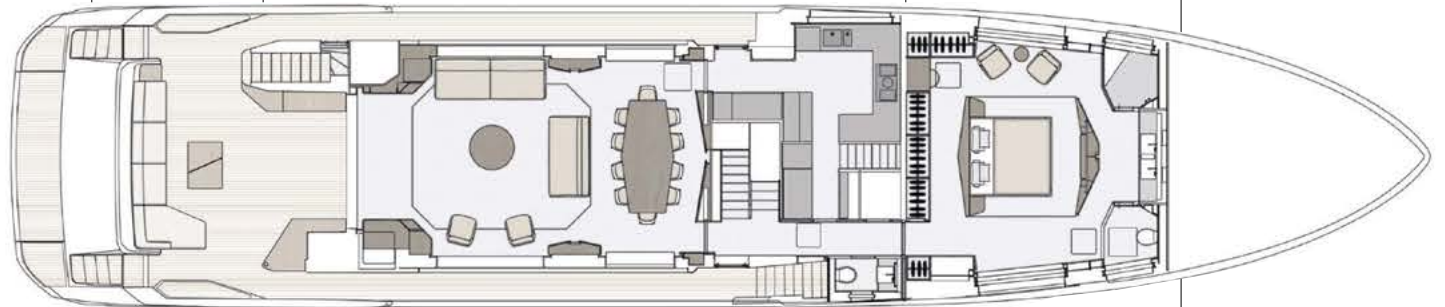
# SUN DECK



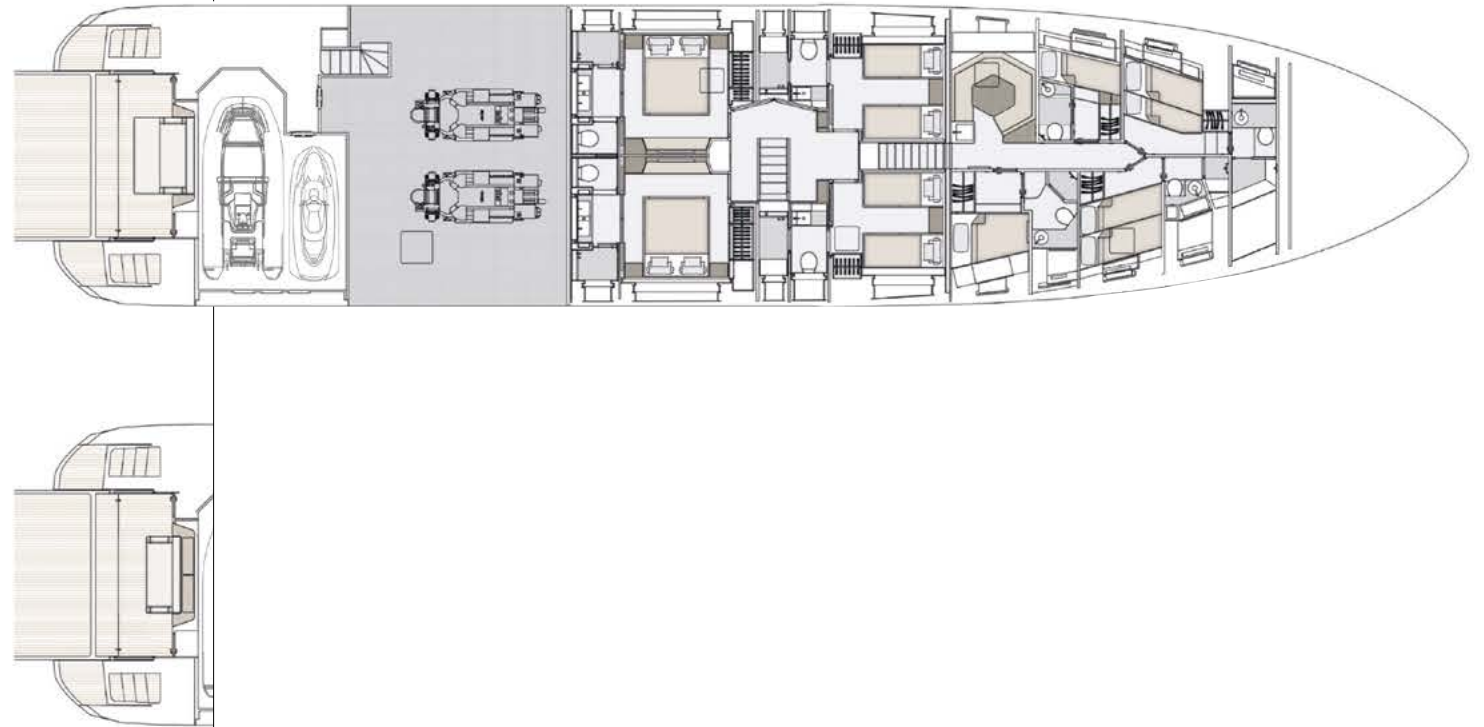
# UPPER DECK



# MAIN DECK



# LOWER DECK





PRELIMINARY BROCHURE  
GRANDE 36M

RELEASE 09.25

This brochure in no way constitutes a contract of sale for the boatyard's vessels to any person or company. All information contained herein, including but not limited to technical and performance data, illustrations, and drawings, is non-binding and for purposes of illustration only. The information in this brochure refers to the boatyard's standard motoryacht models available as of the date of publication. Technical and descriptive information is valid only to the extent that it pertains to the specific vessel that is the subject of a purchase. Contract terms are valid only to the extent that they are contained in a contract of sale. This document is based on information available at the time of publication. Despite efforts to ensure the greatest possible accuracy, the information contained herein may fail to cover all details, omit technical or commercial changes that may have been made subsequent to publication, describe features that are not present, and fail to envisage all circumstances that might occur. Any illustrations, photographs, diagrams and examples shown in this brochure are included solely for the purposes of illustrating the text. Due to the different features of each vessel, the boatyard assumes no liability for actual use based on the illustrated applications.

^ZIMUT

[azimutyachts.com](http://azimutyachts.com)

